

CLOSED CONFIRM™ REMOTE

Installation and Operation

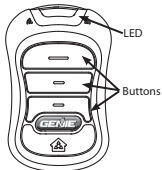
To use the Closed Confirm™ Remote (with a Network Adapter), the powerhead must have this type of label and be equipped with the connection port (See. STEP 2 below). If your powerhead does not meet these criteria—DO NOT attempt to install this product.

ATTENTION: Your garage door opener must have a Serial Number sticker that looks like this, in which the first two numbers are 10 or higher.

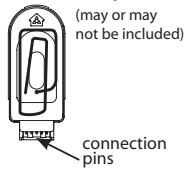


One Closed Confirm™ Remote can operate up to 3 openers or can be programmed to use one, two, or three buttons to operate a single opener. Each opener intended to be run by the Closed Confirm™ Remote must have a Network Adapter installed to receive signals from the Closed Confirm™ Remote. If you do not have or need more Network Adapters, contact your Genie dealer.

Closed Confirm™ Remote



Network Adapter



WARNING

Moving Door can cause serious injury or death.

- Wall Console must be mounted in sight of door, at least 5 feet above floor and clear of moving door parts.
- **Keep people clear** of opening while door is moving

- **Do NOT** allow children to play with Remote or door opener. If safety reverse does not work properly:
- **Close door then disconnect opener** using the manual release handle.
- **Do NOT** use Remote or door opener.
- Refer to door & door opener owner manuals before trying any repairs.

INSTALLATION

Tools required: Step ladder.

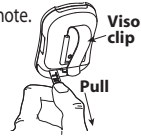
There are two main tasks required for installation of a Closed Confirm™ Remote; a) install the Network Adapter, and b) program the remote to the adapter.

WARNING

Do NOT place fingers, pliers, screw driver or any other device into the powerhead.

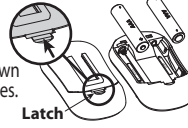
1 Remove the battery pull tab from remote.

NOTE: If the visor clip is NOT already installed—install it now. Slide the straight side of the visor clip all the way into the matching groove on the back of the remote.



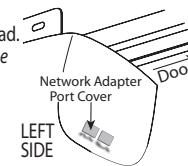
FOR FUTURE REFERENCE: When batteries become weak.

Move the latch toward the cover on back of the remote and lift the cover off. Replace batteries with new "AAA" type. Proper orientation is shown on the circuit board below the batteries. Replace cover.



2 Remove Network Adapter Port Cover from the powerhead.

See powerhead side facing the garage door for port location. The Network Adapter Port Cover has "NETWORK" imprinted below it.

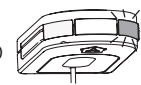


3 Remove the Network Adapter from its packaging and insert it into the port with the antenna wire facing down. Straighten the antenna if needed so that it is as long as possible.



4 A Green LED will come ON. If there is no LED showing;

- Check power is ON to the powerhead,
- Remove the Network Adapter, visually check open port and reinsert Network Adapter allowing up 10 seconds for LED to display.

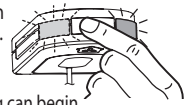


PROGRAMMING

5 Press and release the button on the end of the Network Adapter.

The GREEN LED stays ON and a BLUE LED begins flashing.

Closed Confirm™ Remote programming can begin.

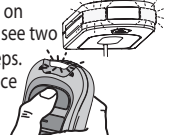


6 Press and release a button on the Closed Confirm™ Remote and its GREEN LED flashes. Network Adapter BLUE LED goes steady ON.



7 Press and release the same button on the Closed Confirm™ Remote and see two GREEN LED flashes accompanied by 2 beeps.

The Network Adapter BLUE LED blinks twice and goes OFF. Closed Confirm™ Remote programming is complete.



8 Press the same button on the Closed Confirm™ Remote and door opener will open or close door.

- NOTE:**
- 1) Each button on the remote is only able to communicate with one adapter (operate one door) at a time.
 - 2) Each door you wish to operate using the Closed Confirm™ Remote must have it's own adapter.
 - 3) To switch a button from one adapter to another—clear the button by pressing and holding it for 10 seconds and reprogramming.

FCC and IC CERTIFIED

This device complies with part 15 of the FCC Rules. Operation is subject to the following two conditions: (1) This device may not cause harmful interference, and (2) this device must accept any interference received, including interference that may cause undesired operation. This equipment generates, uses and can radiate radio frequency energy and, if not installed and used in accordance with the instructions, may cause harmful interference to radio communications. However, there is no guarantee that interference will not occur in a particular situation. If this equipment does cause harmful interference to radio or television reception, which may be determined by turning the equipment OFF and ON, the user is encouraged to try to correct the by one or more of the following measures: a) Re-orient or relocate the receiver antenna, b) increase the separation between the opener and receiver, c) Connect the opener into an outlet on a circuit different from that which the receiver is connected, d) Consult your local dealer. Any modifications or changes to this equipment which are not expressly approved by Overhead Door® Corp. could void the user's authority to operate the equipment.

OPERATION

Complete installation and programming instructions before operating. There are 2 methods of operation.

1. Confirmation of operation:
 - a. The Closed Confirm™ Remote will give a tone and a green LED flash every time an activation command is sent and received.
 - b. Pressing the remote button and getting no response means you're out of range.
2. Confirmation of Door Closure (TABLE).

Visual response	Audible response	Indication
1 15 green flashes, then solid green for 2 seconds	3 short beeps	Close Complete
2 3 red flashes	3 second steady tone	Close Not Complete
3 3 orange flashes	3 second steady tone	Out of range or signal interference or *battery low.

*Low battery may display an out of range response

TROUBLESHOOTING

The following table may help you troubleshoot other possible responses from the Closed Confirm™ Remote.

Problem/Problème/Problema	LED Display/Affichage/Visual DL	Sound/Son/Sonido	Cause/Causar/Causar	Corrective Action/Action corrective/Acción correctiva
Door does not move with button press. La porte ne bouge pas malgré le bouton appuyé. La puerta no se mueve al oprimir el botón.	1 short RED flash 1 clignotement rapide ROUGE 1 parpadeo corto ROJO	None Aucun Ninguno	Closed Confirm™ Remote or remote button is not paired to powerhead. La télécommande Closed Confirm™ ou le bouton à distance ne sont pas connectés à la tête motorisée. Remoto de la puerta Report™ no está apareado a la caja de control.	Program Closed Confirm™ Remote to powerhead. Programmer la télécommande Closed Confirm™ en fonction de la tête motorisée. Programme el Remoto de la puerta Report™ a la caja de control.
	None / Aucun / Ninguno	None / Aucun / Ninguno	Closed Confirm™ Remote is out of range. La télécommande Closed Confirm™ est hors portée. Remoto de la puerta Report™ está fuera de alcance.	Move Closed Confirm™ Remote closer to powerhead. Déplacer la télécommande Closed Confirm™ plus près de la tête motorisée. Mueva el Remoto de la Closed Confirm™ más cerca de la caja de control.
	None / Aucun / Ninguno	None / Aucun / Ninguno	Battery may be low./Le niveau des piles peut être bas./ La batería puede estar baja.	Replace battery./Remplacer les piles./Cambie la batería.
Door opens but does not close. La porte s'ouvre mais ne se ferme pas. La puerta se abre pero no cierra. Door starts to close—stops & returns to OPEN. La porte commence à se fermer, s'arrête et revient à OUVRIIR. La puerta empieza a cerrar, se para y vuelve a ABRIR.	3 RED flashes 3 clignotements ROUGES 3 parpadeos ROJOS	3 second long constant tone Bip long en continu de 3 secondes Tono constante de 3 segundos	Check door for binding, balance, condition and door spring. Check opener for Safe-T-Beam® obstruction or operational problem. Vérifier la porte pour détecter tout grippage, déterminer l'équilibre, l'état et inspecter les ressorts. Vérifier la présence d'obstruction ou de problème opérationnel avec Safe-T-Beam™. Verifique que la puerta no se trabe, el equilibrio, la condición y los resortes de la puerta. Verifique el abridor si tiene obstrucción de Safe-T-Beam (haz luminoso de seguridad) u otro problema de funcionamiento.	Repair problem or contact a trained door system technician Rectifier le problème ou contacter un technicien spécialisé en systèmes d'ouvertures de porte. Repare el problema o comuníquese con un técnico perito en sistemas de puertas.

Switching or relocating the Network Adapter from one powerhead to another will carry the Closed Confirm™ Remote programming with Network Adapter. The Closed Confirm™ Remote will only operate the powerhead unit on which the Network Adapter is install

NOTE: To erase a paired button on the Closed Confirm™ Remote—Press and hold the button for 20 seconds until 3 short beeps/3 red flashes.

For more information, please visit www.devancocanada.com or call toll free at 855-931-3334

***HOW TO ORDER
REPAIR PARTS***

DEVANCO CANADA

19192 HAY ROAD, UNIT Q
SUMMERSTOWN, ON K0C 2E0

TOLL FREE: 855-931-3334

www.devancocanada.com

**WHEN ORDERING REPAIR PARTS
PLEASE SUPPLY THE
FOLLOWING INFORMATION:**

- ✓ PART NUMBER
- ✓ DESCRIPTION
- ✓ MODEL NUMBER