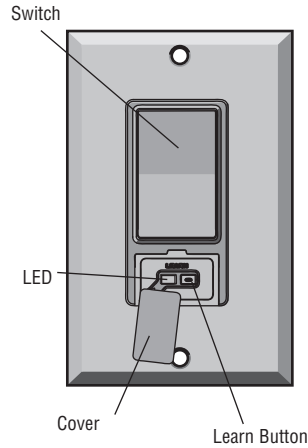


OVERVIEW

The Remote Light Switch offers a convenient way to control the lights in your home. The Remote Light Switch is compatible with Security+ 2.0™ and MyQ™ products. The Remote Light Switch is compatible with up to 8 Security+ 2.0™ remote controls and a combination of up to 8 MyQ™ enabled garage door openers or LiftMaster® Internet Gateway devices. This product is NOT recommended for control of household appliances or fans. Not for use with 3-way or 4-way switch combinations.



NOTE: The wall plate is not provided.

SPECIFICATIONS

Bulb Type:	Compact fluorescent, incandescent, or LED
Max Load Rating:	300 Watts
Incandescent Lamp	300 Watts
Compact Fluorescent Lamp (CFL)	2.5 Amps
Voltage	120 Vac

WARNING

To prevent possible **SERIOUS INJURY** or **DEATH** from electrocution or fire:

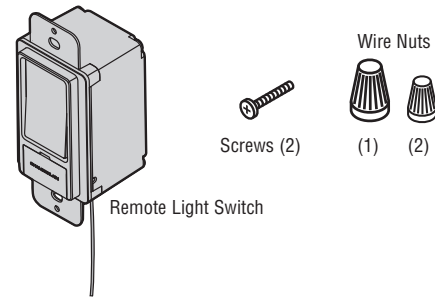
- Turn off power at the fuse box or circuit breaker **BEFORE** proceeding.
- The light control is **ONLY** for indoor use.
- Installation and wiring **MUST** be in compliance with **ALL** local electrical and building codes.

NOTICE: To comply with FCC and/or Industry Canada (IC) rules, adjustment or modifications of this transceiver are prohibited. **THERE ARE NO USER SERVICEABLE PARTS.**

This device complies with Part 15 of the FCC rules and IC RSS-210. Operation is subject to the following two conditions: (1) this device may not cause harmful interference, and (2) this device must accept any interference received, including interference that may cause undesired operation.

AVIS : Les règles de la FCC et/ou d'Industrie Canada (IC) interdisent tout ajustement ou toute modification de ce récepteur. IL N'EXISTE AUCUNE PIÈCE SUSCEPTIBLE D'ÊTRE ENTRETENUE PAR L'UTILISATEUR. Cet appareil est conforme aux dispositions de la partie 15 du règlement de la FCC et de la norme IC RSS-210. Son utilisation est assujettie aux deux conditions suivantes : (1) ce dispositif ne peut causer des interférences nuisibles, et (2) ce dispositif doit accepter toute interférence reçue, y compris une interférence pouvant causer un fonctionnement non souhaité.

CARTON INVENTORY

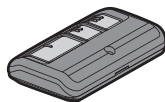


MODES OF OPERATION

The remote light switch can be programmed to Security+ 2.0™ remote controls, MyQ™ garage door openers, or LiftMaster® Internet Gateway devices.

REMOTE CONTROL OPERATION:

Allows you to activate the remote light switch from a remote control.



NOTE: If your remote control is already programmed to your garage door opener, choose a different remote control button to program to the remote light switch.

GARAGE DOOR OPENER OPERATION:

Allows you to synchronize the remote light switch with your garage door opener light bulbs. The synchronization with the garage door opener lights is disabled if you manually turn the light switch on. The light switch must be OFF to synchronize the garage door opener with the light switch.



Example: The garage door opener light bulbs are set to automatically turn off after 4 ½ minutes, the remote light switch will also turn off after 4 ½ minutes.

INTERNET GATEWAY OPERATION:

Allows you to activate the remote light switch from a web browser (requires the internet gateway accessory model 828LM).



INSTALLATION

BEFORE YOU BEGIN:

This device **REQUIRES** a ground; if a ground is not available, contact a qualified electrician. If you are not experienced and familiar with electrical wiring and electrical codes, contact a qualified electrician. Some codes require installation by a qualified electrician. Install in accordance with all national and local codes. Ensure the existing switch and light is working prior to installing the new switch.

1. Disconnect power at the circuit breaker or fuse box **BEFORE** proceeding.
2. Remove the wall plate and set aside for re-assembly.

REMOVE OLD WALL SWITCH:

1. Remove switch from switch box.
2. During removal, identify or label the load and line wires.

NOTE: Typically a line wire is the incoming hot wire from the circuit breaker. The load wire is the wire supplying power between the switch and the light.

3. Keep all load wires separated from line wires.

INSTALL NEW SWITCH (Figure 1):

1. Identify the antenna routing (Figure 1).
2. Connect the wires (Figure 2). **NOTE:** If your wiring includes a neutral wire this wire is not required, combine neutral wire(s) and cap with wire nut (not provided).

- Green wire to ground.

Connect the green wire on the new switch to the exposed copper ground, green wire, or to the ground connection within metal switch box. **NOTE:** If ground doesn't exist contact an electrician to add a ground. This product will not function without a proper ground.

- Red wire to load.
- Black wire to line.

3. Secure connections with a wire nut and wrap each wire nut with electrical tape.

NOTE: Turn all wire nuts clockwise, making sure the bare wires are covered. Tug on each wire nut to make sure the connections are good.

4. Carefully pack the wiring back into switch box. Make sure the wires are not pinched or strained. Make sure the antenna is hanging straight down between the switch box and the drywall.
5. Fasten the remote light switch to the switch box with the screws (provided).
6. Fasten the wall plate securely over the switch box with the original screws from the wall plate.

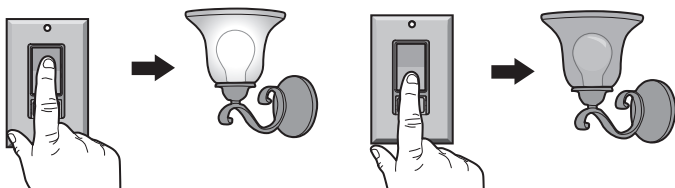
TEST

1. Turn on the power to circuit at fuse box or circuit breaker.
2. Test the light switch, manually press the light switch to ensure the light is functional (Figure 3). If it is not functional, see *Troubleshooting*.

Figure 3

Press the switch to the ON position. The light should turn on.

Press the switch to the OFF position. The light should turn off.



⚠️ WARNING

To prevent possible **SERIOUS INJURY** or **DEATH** from electrocution or fire:

- Turn off power at the fuse box or circuit breaker **BEFORE** proceeding.
- The light control is **ONLY** for indoor use.
- Installation and wiring **MUST** be in compliance with **ALL** local electrical and building codes.

Figure 1

IMPORTANT NOTE: This illustration is **ONLY** an example and your application and wiring may be different.

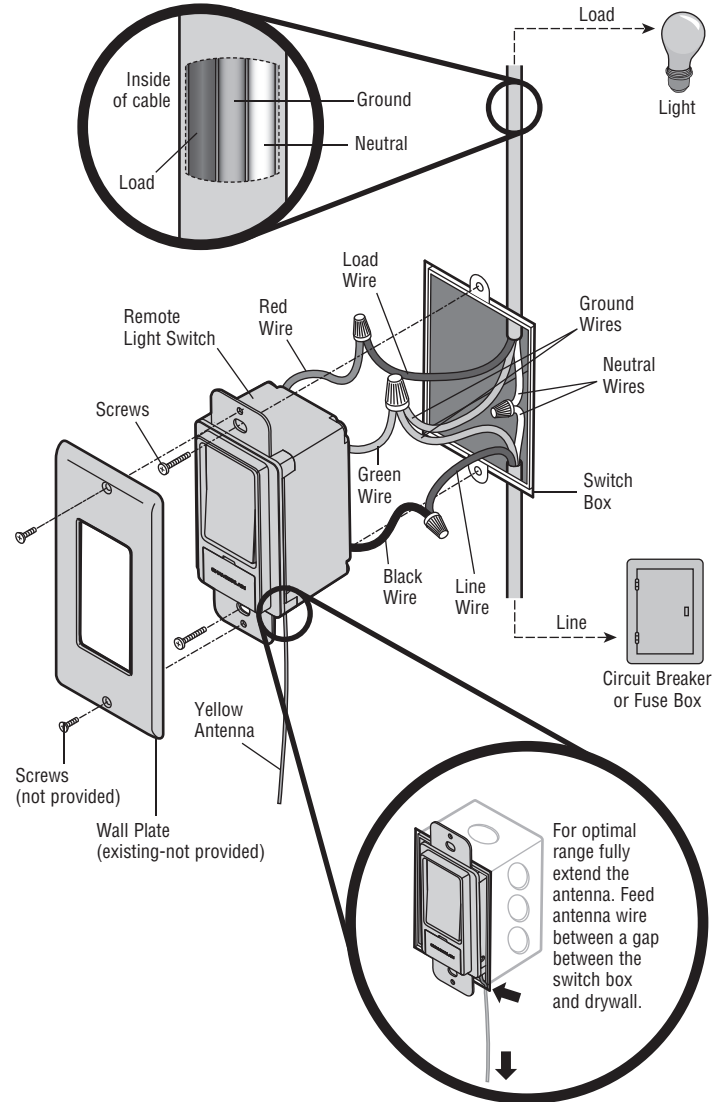
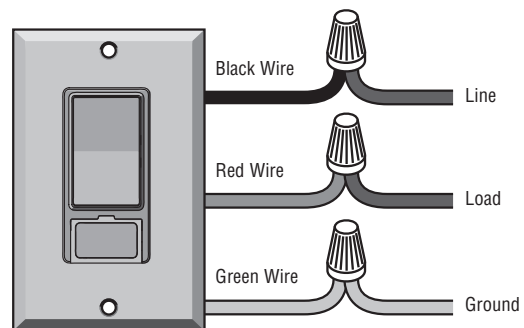


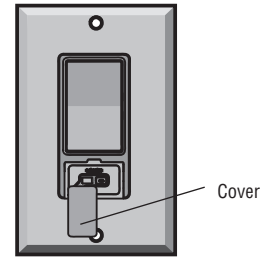
Figure 2



INSTALLATION (CONTINUED)

3. Open the cover on the light switch so you can view the LED (Figure 4).
4. Allow up to 10 minutes for remote light switch to power up properly, when the LED stops flashing proceed to Programming.

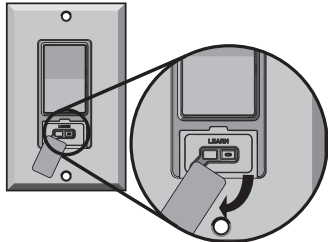
Figure 4



PROGRAMMING

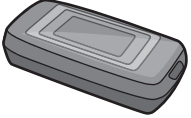
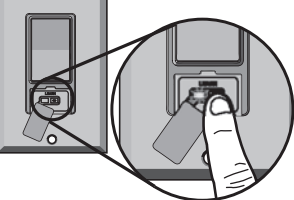
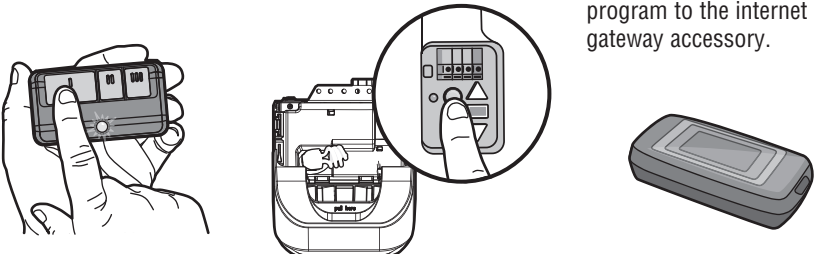
IMPORTANT NOTE: When the LED has stopped flashing (up to 10 minutes), proceed to Programming.

1



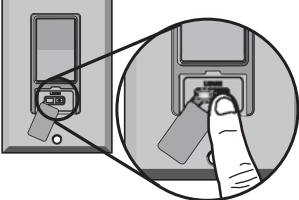
Lift the cover on the remote light switch to access the "LEARN" button.

2 Press and HOLD the remote control button. **OR** Press and release the Learn button on the garage door opener. **OR** Visit www.myliftmaster.com. Go to "Manage Devices", then "Learn Device" to program to the internet gateway accessory.



3 Then press and release the "LEARN" button. Both the LED on the remote light switch and the light will flash once indicating the programming is complete.

NOTE: If needed, press and release the "LEARN" button with a narrow instrument.

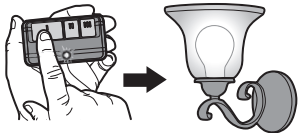


TEST

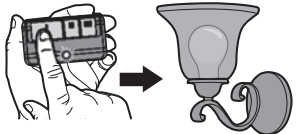
Testing the remote light switch will vary depending on your application.

REMOTE CONTROL

Press the remote control button. The light should turn on.



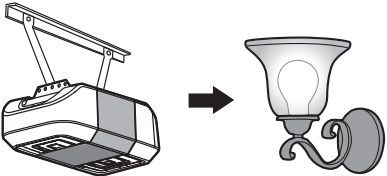
Press again and the light should turn off.



Test the remote control operation at various locations within your home for convenience and range. The remote control range will vary depending on your house and wiring construction. The range may be reduced by metal lath, foil-backed insulation or aluminum siding.

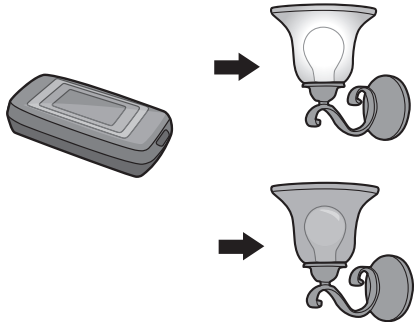
GARAGE DOOR OPENER

Activate the garage door opener. The light should turn on. The light will stay on for the same length of time as your garage door opener lights.



INTERNET GATEWAY

Control the light from an internet enabled computer or smartphone.

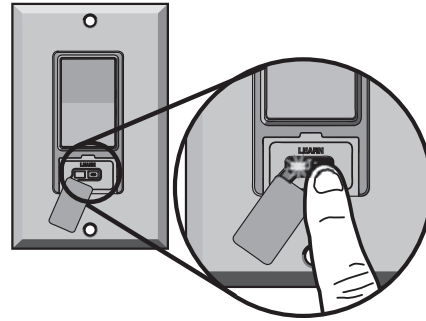


NOTE: If the light does not turn on and off, repeat programming steps.

TO ERASE ALL CODES FROM MEMORY

- 1** Press and HOLD the “LEARN” button until the LED flashes (approximately 6 seconds). All codes are now erased.

IMPORTANT NOTE: If multiple devices are programmed to the switch, ALL devices will be erased.



TROUBLESHOOTING

If the light does not operate, below are some troubleshooting suggestions.

Symptom	Solution
The light does not operate from the switch.	<ul style="list-style-type: none"> • Verify the power is ON. Check the fuse box or circuit breaker. • Verify the light bulb is “good”. • Press the top half of the remote light switch to make sure it is ON. • Ensure the device is properly grounded. • Verify the electrical Line and Load wiring is correct. If you are unsure which wires are Line and Load, reverse the Line and Load wire connections.
The light does not operate from the remote control.	<ul style="list-style-type: none"> • Make sure you are pressing the remote control button selected to operate the light control. • The LED on the remote control should glow when the button is pressed, if not replace the battery. • Program the remote control to the remote light switch.
The LED flashes for more than 10 minutes and cannot enter the programming mode.	<ul style="list-style-type: none"> • This indicates an issue with low voltage or improper grounding. Ensure the device is properly grounded. Contact a qualified electrician.

CAUTION

To avoid electric shock, press the switch to the OFF position when changing the light bulb.

HOW TO ORDER REPAIR PARTS

DEVANCO CANADA
19192 HAY ROAD, UNIT Q
SUMMERSTOWN, ON K0C 2E0

TOLL FREE: 855-931-3334
www.devancocanada.com

**WHEN ORDERING REPAIR PARTS
PLEASE SUPPLY THE
FOLLOWING INFORMATION:**

- ✓ PART NUMBER
- ✓ DESCRIPTION
- ✓ MODEL NUMBER