



# EL1SS

Telephone Entry System

## Installation and Programming Manual

**LiftMaster®**

For more information,  
please visit [www.devancocanada.com](http://www.devancocanada.com)  
or call toll free at 855-931-3334

<b>INTRODUCTION .....</b>	<b>2-3</b>
Cable Requirements .....	2
Dimensions .....	2
Carton Inventory .....	3
Description of the Processor Board .....	3
 <b>INSTALLATION .....</b>	 <b>4-12</b>
Mount the Unit .....	4
Overview of Telco Wiring .....	4
Typical Telco Overview with the Unit .....	5
Wiring the Unit With a Telco Line .....	6
Wiring the Unit Without a Telco Line .....	6
Wiring a Gate Operator (Normally Open) .....	7
Wiring an Auto-Call Sensor .....	7
Wiring a Gate Operator (Normally Open) and a Door Strike Lock (Normally Open) .....	8
Wiring a Gate Operator (Normally Open) and a Maglock (Normally Closed) .....	9
Wiring a Door Strike Lock (Normally Open) .....	10
Wiring a Maglock (Normally Closed) .....	10
Earth Ground Rod .....	11
Power Wiring .....	11
Plug the Transformer into the Outlet .....	12
Close the Unit .....	12
Set the Unit Master Code .....	12

<b>TESTING .....</b>	<b>13</b>
Test the Gate/Door Relays .....	13
Test the Telephone Connections .....	13

<b>PROGRAMMING .....</b>	<b>14-20</b>
General Instruction .....	14
Code Setup .....	15
Code Operation .....	15
Telephone Programming .....	16
Telephone Commands .....	17
Quick Reference .....	18-20

<b>REPAIR PARTS .....</b>	<b>21</b>
---------------------------	-----------

<b>EL1SS MASTER CODE .....</b>	<b>21</b>
--------------------------------	-----------

<b>WARRANTY .....</b>	<b>22</b>
-----------------------	-----------

**CABLE REQUIREMENTS**

Outdoor installations require shielded cable. Non-shielded cable can be used for indoor installations ONLY.

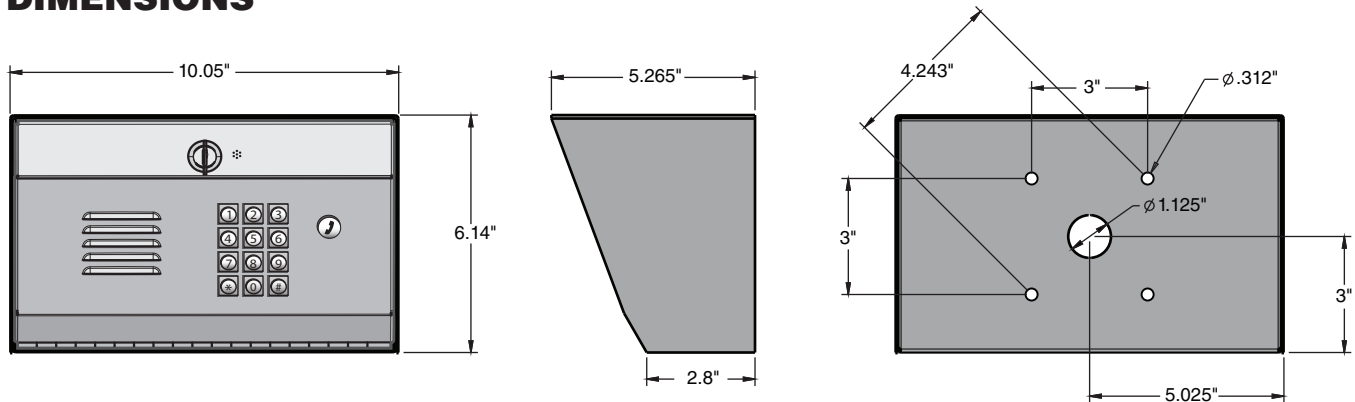
PROCESSOR BOARD	WIRE TYPE	RECOMMENDATIONS
From the power transformer at 120 Vac outlet	2 - Conductor Cable	Shielded Only - See <b>Power Wire Table Below</b>
From the door strike, maglock or gate operator	2 - Conductor Cable	See device specifications for wire size
From the strike power supply (if needed)	2 - Conductor Cable	See device specifications for wire size
From the Earth ground to processor board	12 AWG copper wire, PVC insulated or 12 AWG copper wire, uninsulated	Belden #9912  Belden #8011
Residence and Telco phone lines	24 AWG twisted pair telephone wire	Shielded - Belden #9502
From the processor board	24 AWG twisted pair telephone wire	Shielded - Belden #9502
Between processor boards on multiple entrance installation	24 AWG twisted pair telephone wire	Shielded - Belden #9502

**POWER WIRE TABLE**

DISTANCE	AC POWER WIRE SIZE
Under 30 feet	18 AWG
30 - 75 feet	18 AWG
75 - 150 feet	18 AWG
150 - 250 feet	16 AWG
250 - 500 feet	12 AWG

**NOTE:** LiftMaster is not responsible for conflicts between the information listed in the above table and the requirements of local building codes. The information is for suggested use only. Check local building codes before installation.

**DIMENSIONS**

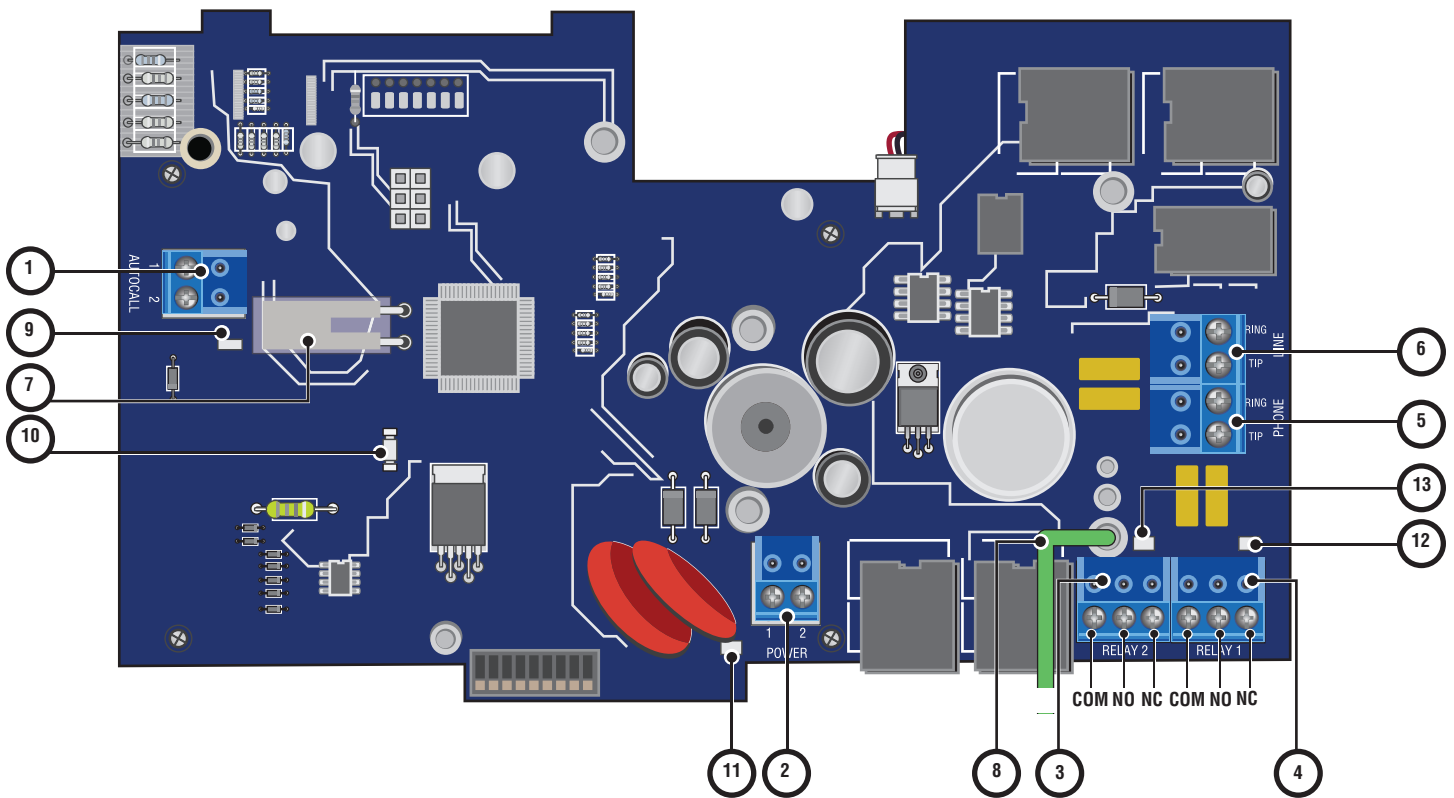


**Power Supply:** 12 Vac 20 VA or 16 Vdc 2.5A

## CARTON INVENTORY

- Unit (1)
- Key (1)
- 12 Vac 20 VA or 16 Vdc 2.5A Plug-In UL Listed Power Transformer (1)
- Bypass Board (1)
- Manual (1)

## DESCRIPTION OF THE PROCESSOR BOARD

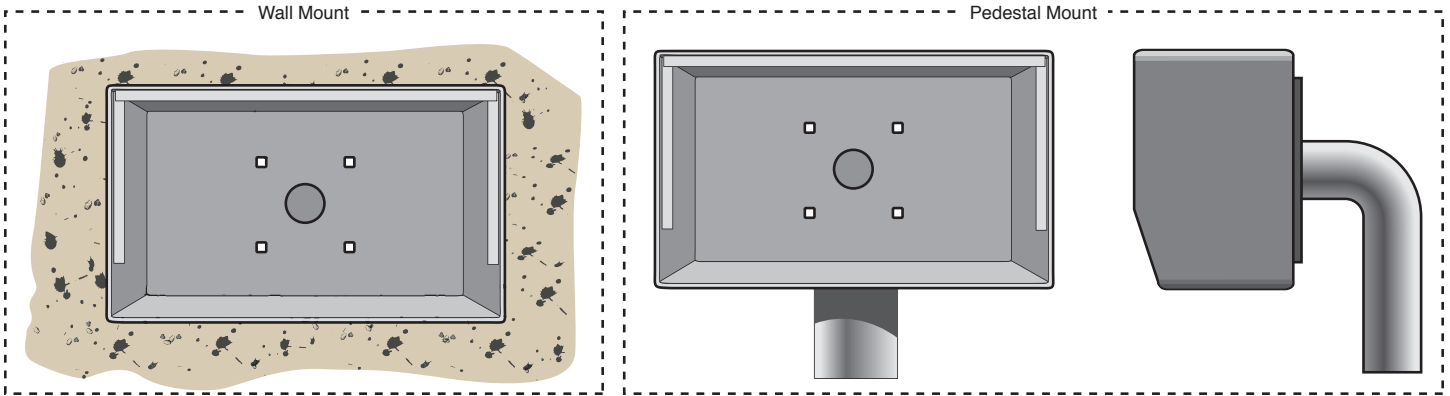


- ① **Autocall Input:** Connector for accessory device to trigger home dialing.
- ② **Power Connector:** 12 Volt AC power input.
- ③ **Relay 2 Output:** Form “C” secondary control relay.
- ④ **Relay 1 Output:** Form “C” primary control relay.
- ⑤ **Phone Output:** Telephone return connection to home or office phones.
- ⑥ **Line Input:** Telephone input connection from “Telco” service provider.
- ⑦ **Tamper Switch**
- ⑧ **Ground Wire:** Wire must be connected to positive earth ground. See Earth Ground Rod.
- ⑨ **Status LED**
- ⑩ **Voice Data Send Status LED**
- ⑪ **Power Status LED**
- ⑫ **Relay 1 (Primary) Output Status LED**
- ⑬ **Relay 2 (Secondary) Output Status LED**

## MOUNT THE UNIT

1. Choose the mounting location for the unit.
2. Unlock faceplate and open.
3. Mark holes and pre-drill holes.
4. Mount to a solid surface or post (hardware not provided).

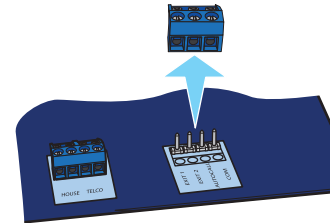
Accessories: Optional method to mount.  
LiftMaster Gooseneck Pedestal Post Models  
PED42 or PED64



## OVERVIEW OF TELCO WIRING

Many phone companies have updated their color standards due to the use of Cat 5 cable for most phone line installs, and keep residential and business installs in line with each other. In the new standard, there is no green, red, black or yellow wires, they have been replaced by white/blue, blue/white, white/orange, and orange/white. If the wire is primarily orange with white stripes then that color is orange/white. Refer to the table below. The NID labels will most likely have the old coloring scheme on them, and most telephone wiring components you can purchase will still reflect the original colors.

- Wire connectors can be removed to simplify wiring.
- DO NOT overload wire connectors. Use ONLY one wire per hole.

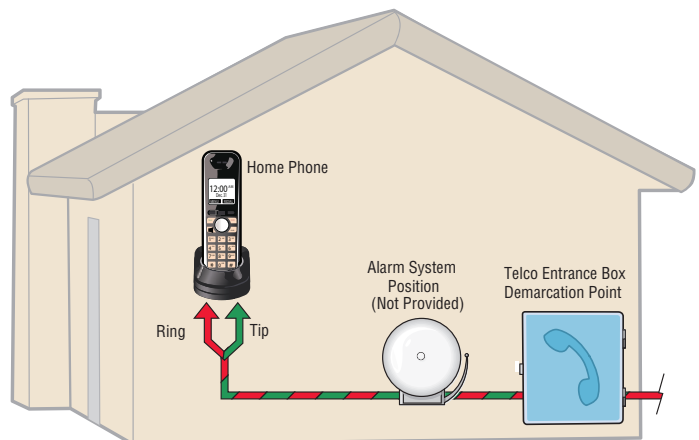


Function	Old Color Standard	New Color Standard
Tip 1	Green	White/Blue
Ring 1	Red	Blue/White
Tip 2	Black	White/Orange
Ring 2	Yellow	Orange/White

### NOTES:

- The voltmeter measurement between the Tip and Ring should be between 48 and 53 Vdc.
- Never run data wires and high voltage wires in the same conduit. The high voltage wires may interfere with the data wires and cause the system to malfunction.
- Reversed polarity will not damage the unit, however, some telephones will not function properly.

### Typical Telco Overview



## TYPICAL TELCO OVERVIEW WITH THE UNIT

### CONNECTING THE BYPASS BOARD

The bypass board allows the EL1SS unit to be disconnected without interrupting normal telephone operation. If the unit is used in conjunction with an alarm system, you must connect the telephone line to the alarm system first or the unit will not operate properly.

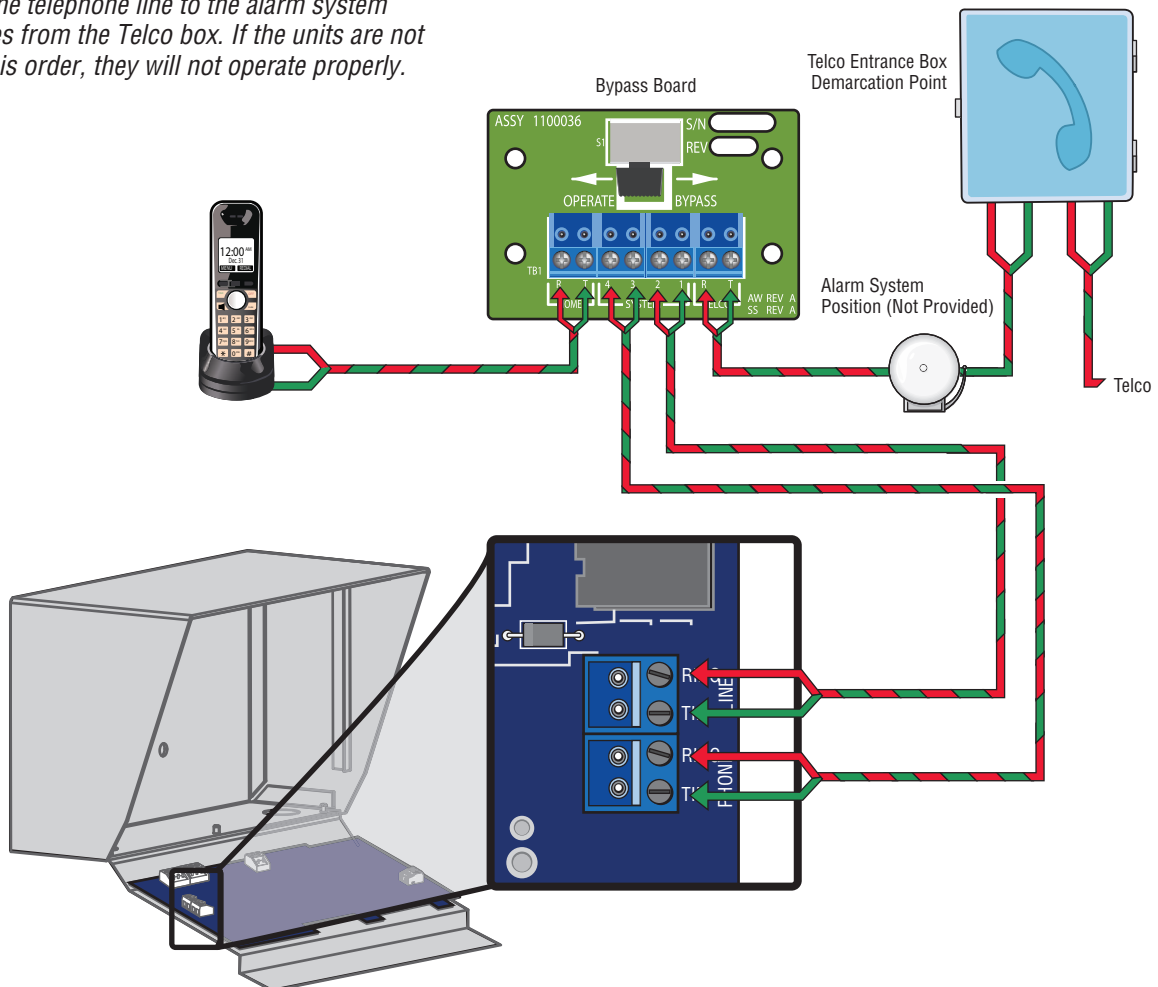
#### NOTES:

- When a unit is **in use**, the bypass switch must be set to **operate**.
- When a unit is **disconnected**, the bypass switch must be set to **bypass**.
- If the unit will be connected with an alarm system, you must connect the telephone line to the alarm system first in the series from the Telco box. If the units are not connected in this order, they will not operate properly.

### WARNING

Disconnect power at the fuse box BEFORE proceeding. The unit MUST be properly grounded and connected in accordance with national and local electrical codes. **NOTE:** The unit should be on a separate fused line of adequate capacity.

- A static discharge can damage circuit boards
- NEVER run telco wires and high voltage wires in the same conduit. The high voltage may interfere with the telco wires, possibly causing the system to malfunction.



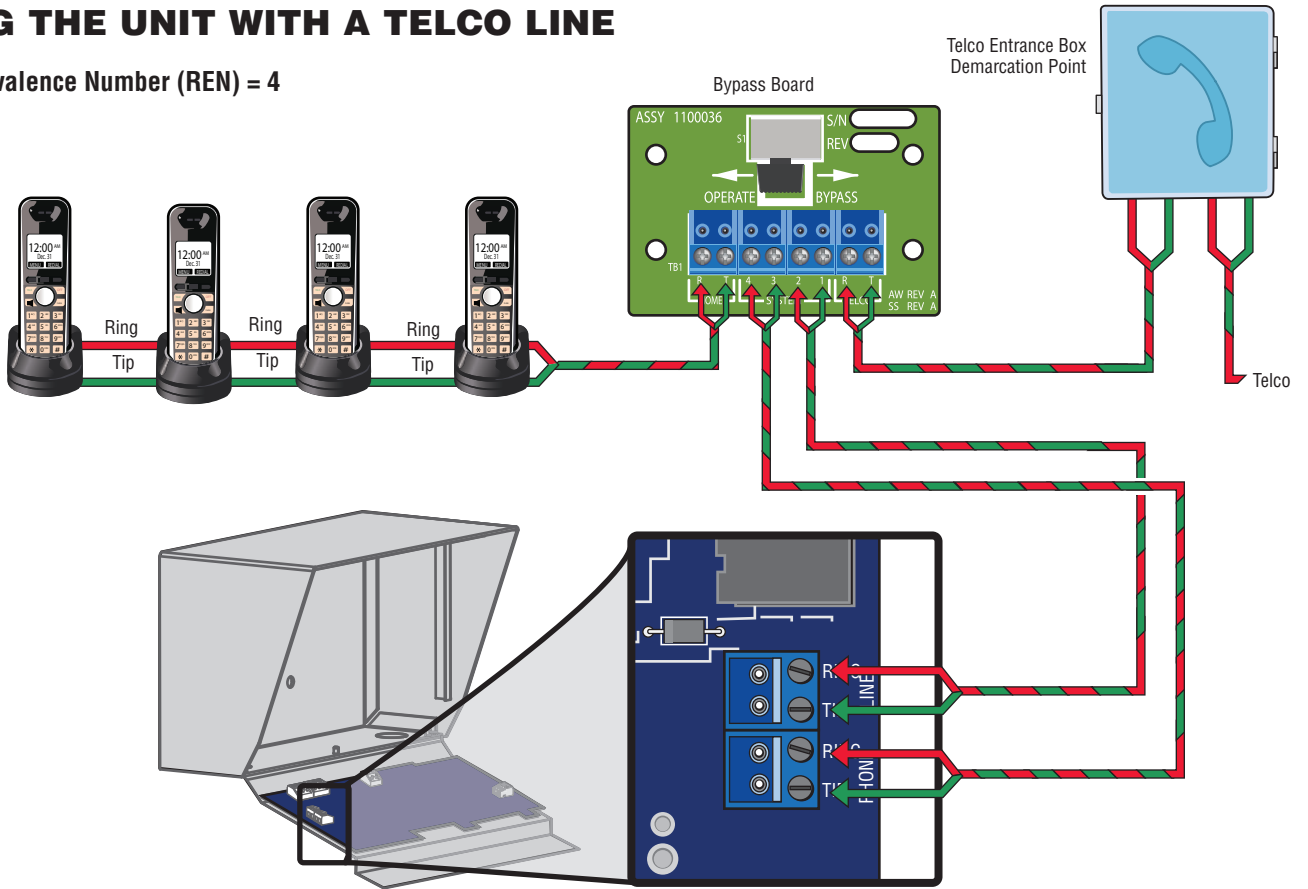
Phone lines with DSL service. In order for the EL1SS to function normally a DSL filter is required to separate the DSL (digital) signal from the telephone service (POTS).

1. Install the splitter between the demarcation box and the EL1SS.
2. Route the DSL/Phone wires from the demarcation box to the splitter's input terminal.
3. Run a copper, twisted pair from the splitter's phone output to the EL1SS.
4. Run the data wires from the splitter to the resident's computer network.
5. Run the residence phone wires from the EL1SS to the residence phone(s).

*Never run data wires and high voltage wires in the same conduit. The high voltage wires may interfere with the data wires and cause the system to malfunction.*

### WIRING THE UNIT WITH A TELCO LINE

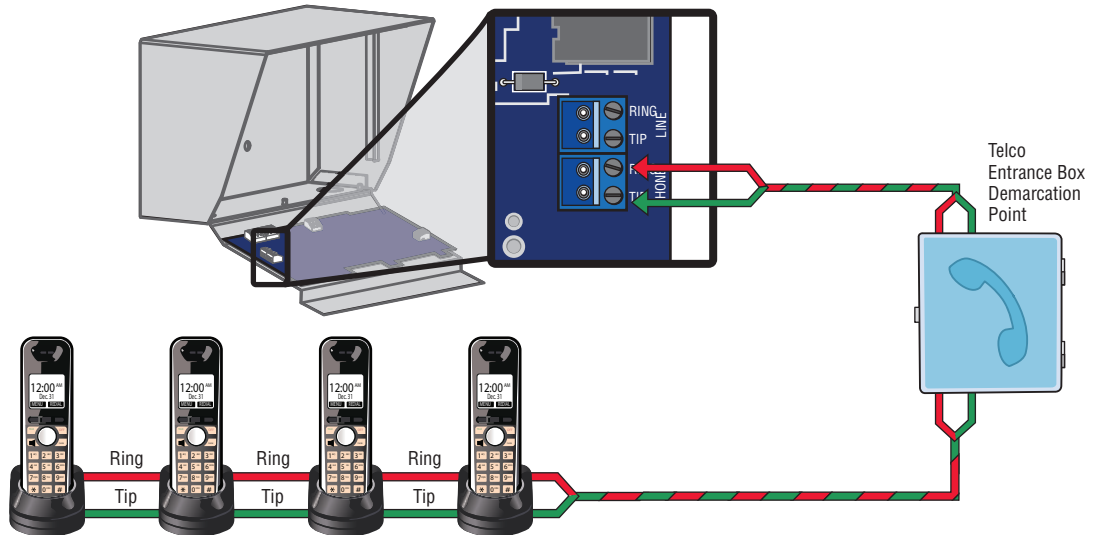
Ringer Equivalence Number (REN) = 4



### WIRING THE UNIT WITHOUT A TELCO LINE

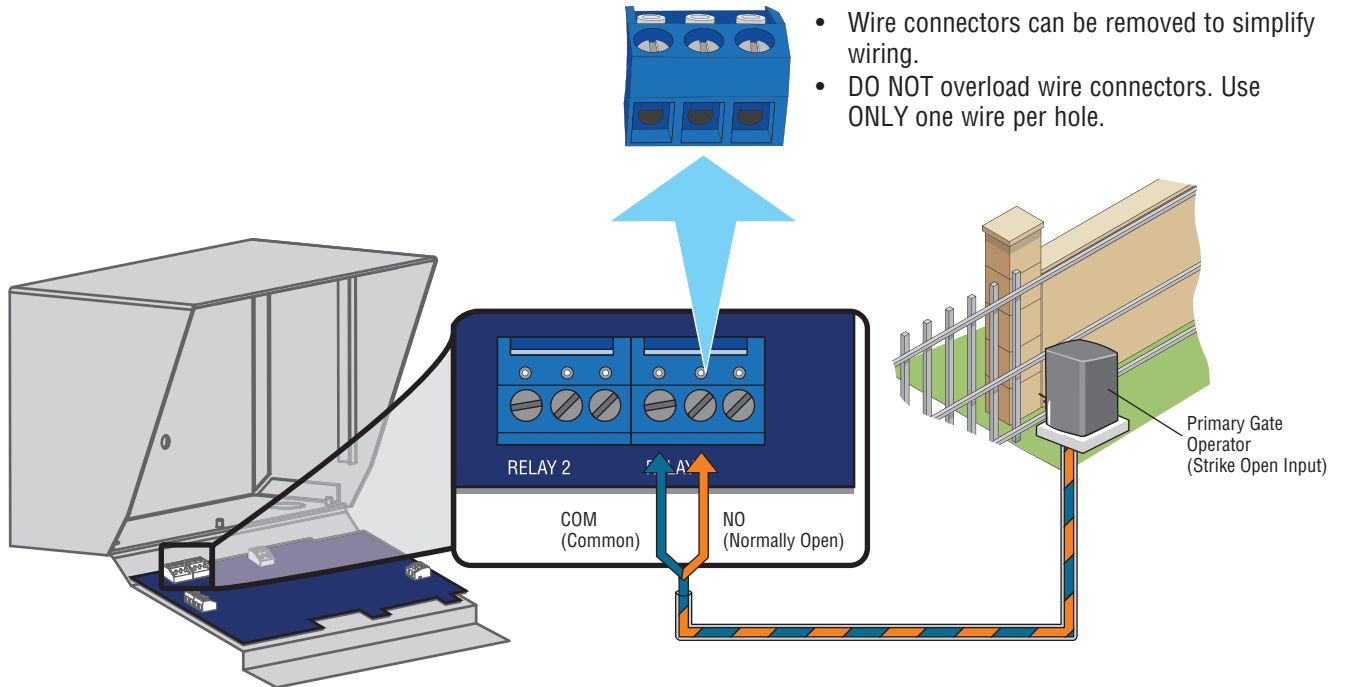
The unit can be a stand alone system that allows communication between the unit and the resident's phones.

Ringer Equivalence Number (REN) = 4



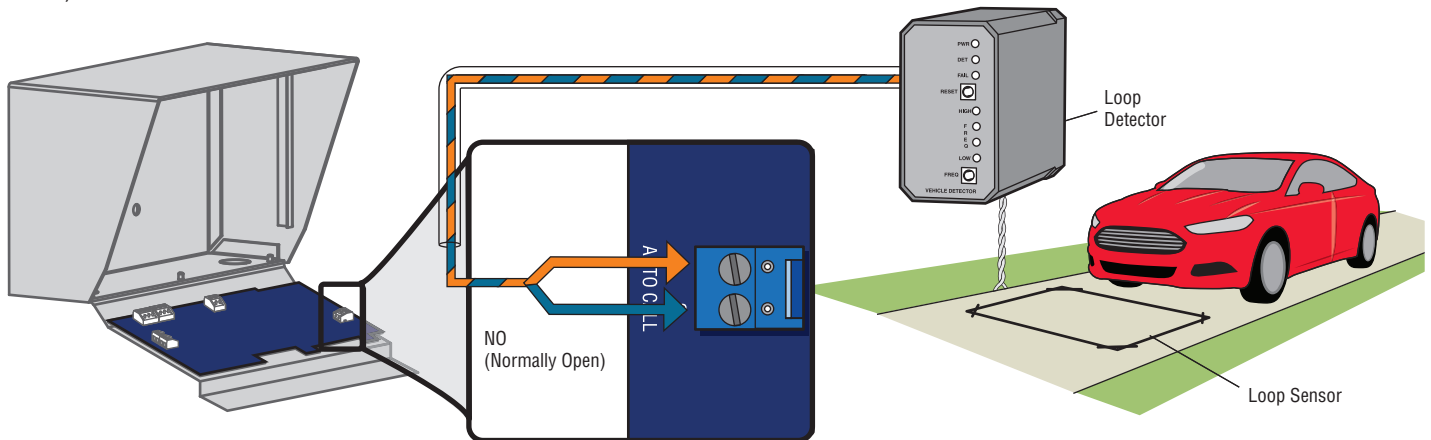
## WIRING A GATE OPERATOR (NORMALLY OPEN)

The gate operator can be connected to Relay 1 or Relay 2. See the *Programming* section for information about configuring Relays 1 and 2.



## WIRING AN AUTO-CALL SENSOR

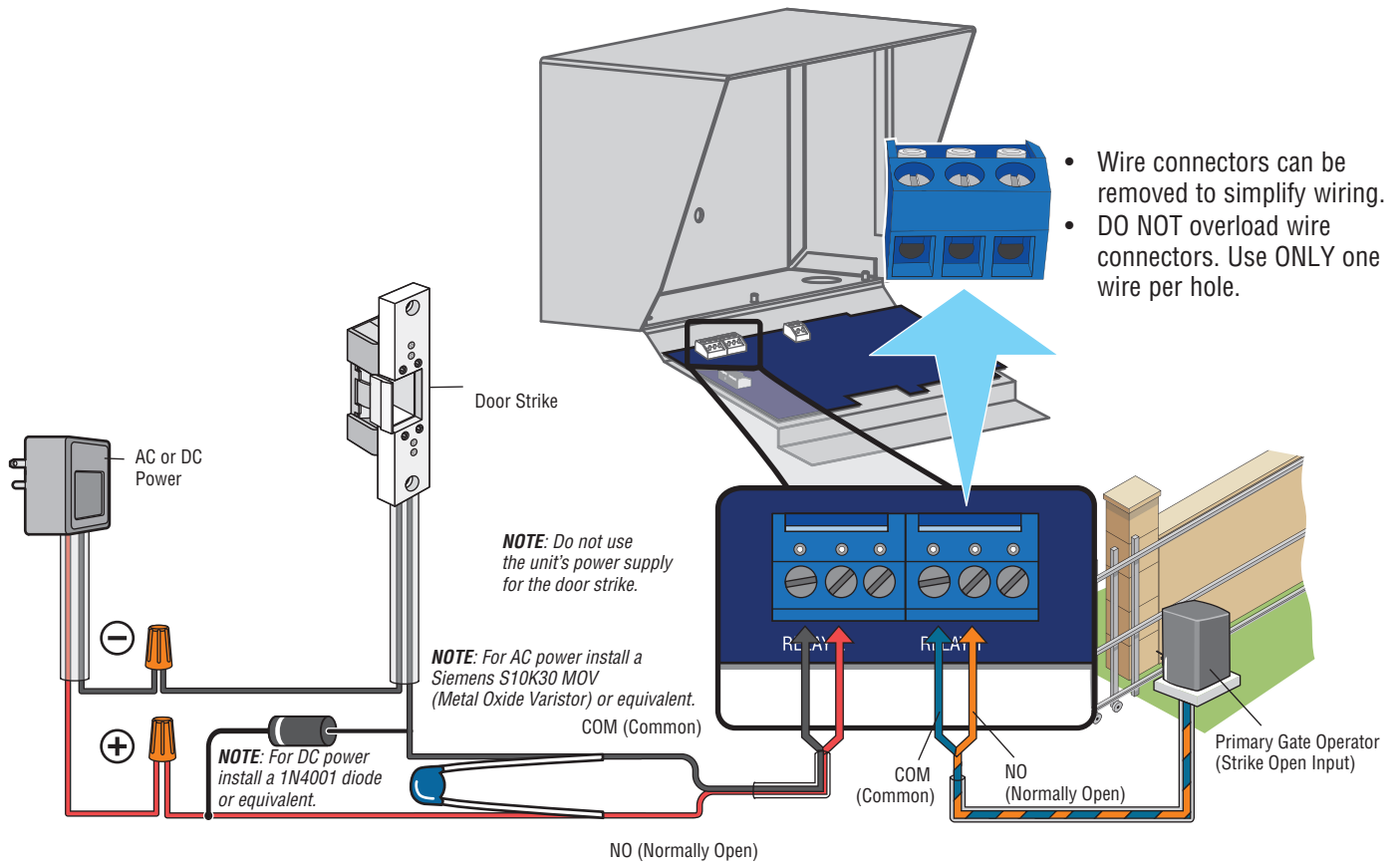
The Auto-Call feature will enable the unit to contact the resident when a driveway sensor (or any device that provides a contact closure) is activated.





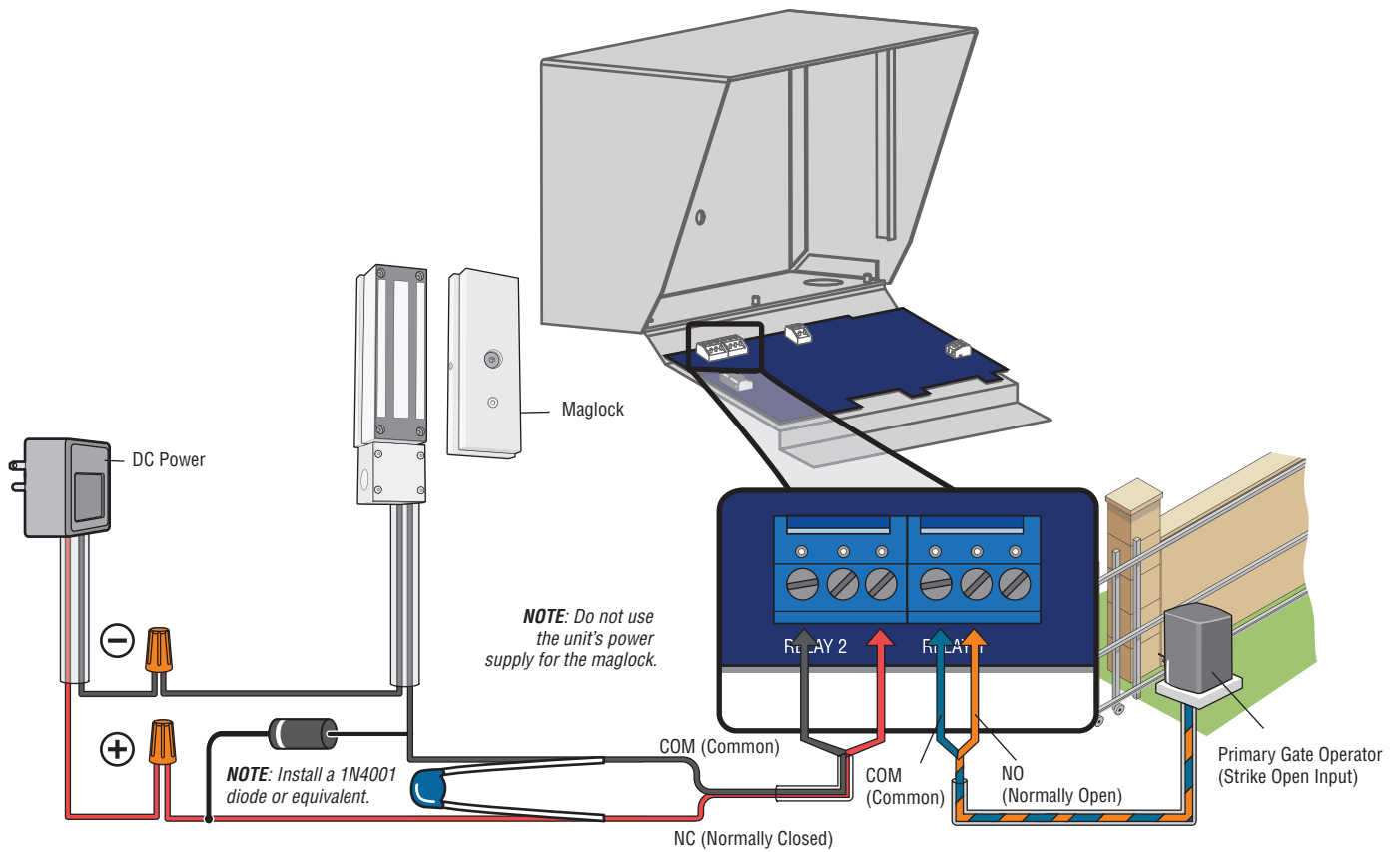
## WIRING A GATE OPERATOR (NORMALLY OPEN) & A DOOR STRIKE LOCK (NORMALLY OPEN)

The door strike can be connected to Relay 1 or Relay 2. See the *Programming* section for information about configuring Relays 1 and 2.



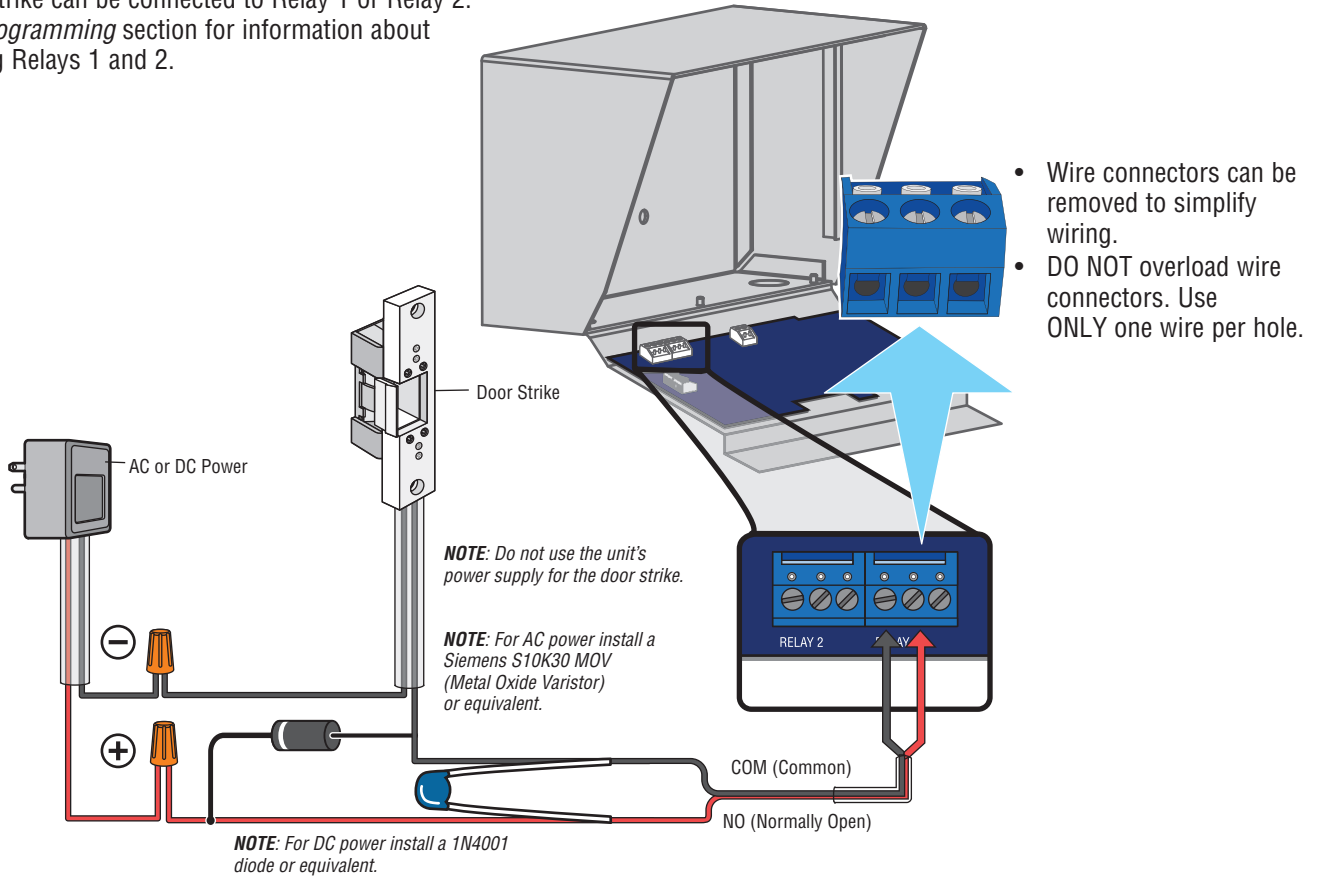
## WIRING A GATE OPERATOR (NORMALLY OPEN) & A MAGLOCK (NORMALLY CLOSED)

The maglock can be connected to Relay 1 or Relay 2. See the *Programming* section for information about configuring Relays 1 and 2.



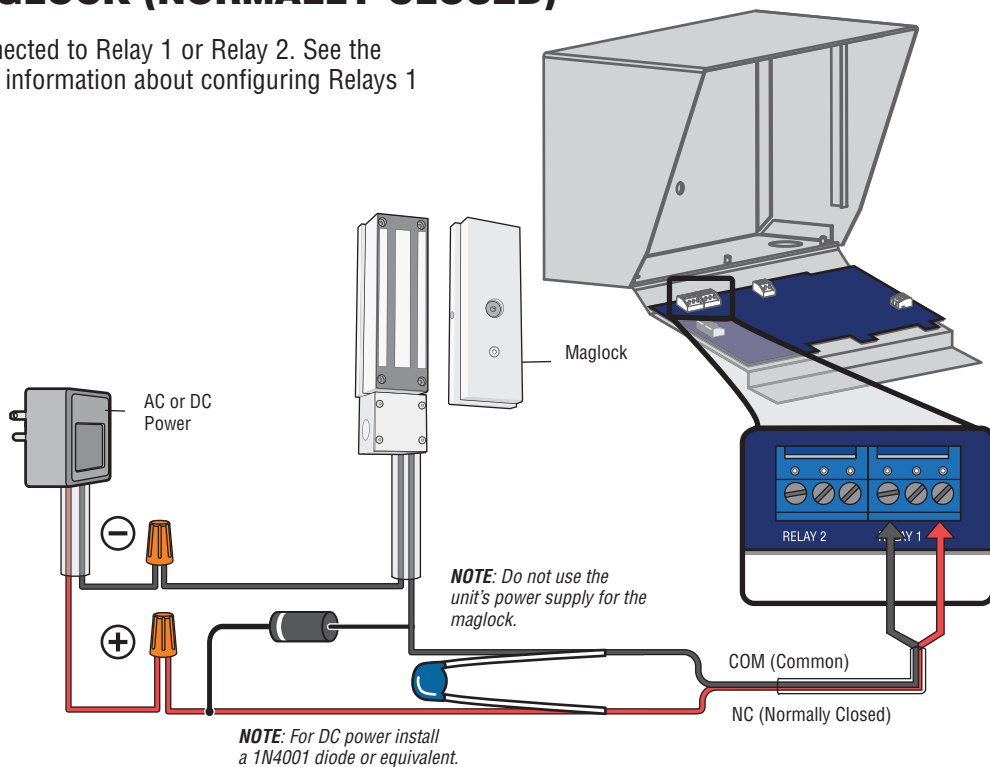
## WIRING A DOOR STRIKE LOCK (NORMALLY OPEN)

The door strike can be connected to Relay 1 or Relay 2. See the *Programming* section for information about configuring Relays 1 and 2.



## WIRING A MAGLOCK (NORMALLY CLOSED)

The maglock can be connected to Relay 1 or Relay 2. See the *Programming* section for information about configuring Relays 1 and 2.



## EARTH GROUND ROD

### CAUTION

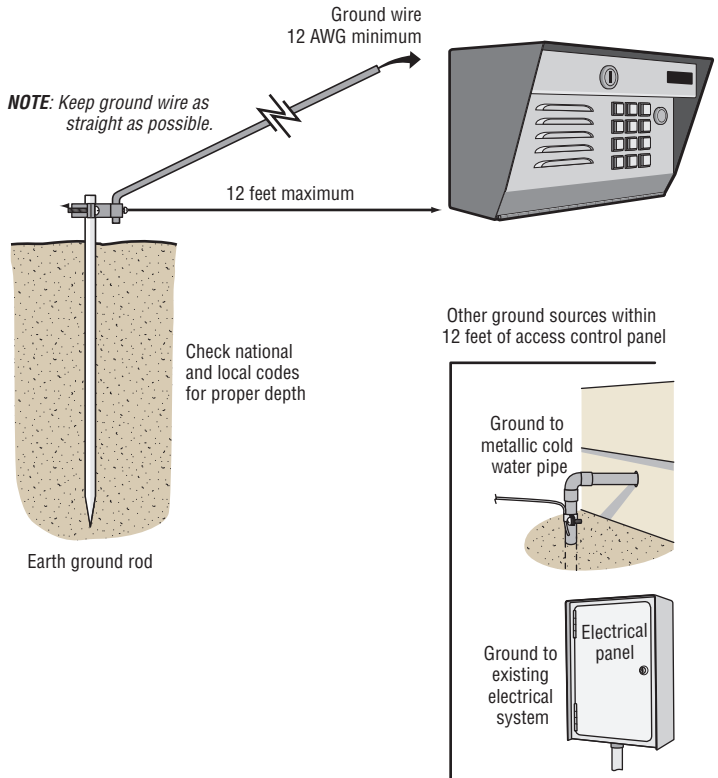
To AVOID damaging gas, power or other underground utility lines, contact underground utility locating companies BEFORE digging.

Connect the green ground wire to the grounding rod.

Run the wire from unit to suitable earth ground.

**NOTE:** Shield connections on boards should not be connected to ground wire.

**IMPORTANT:** An earth ground rod is strongly recommended and should be no further than 12 feet from the unit and use a minimum of 12 gauge wire in most cases. The type and length of earth ground rods vary by region. Contact the building inspector's office in the municipality where you plan to install the unit for correct grounding materials and installation procedures.



## POWER WIRING

The 110 Vac outlet must be dedicated to the unit only. This outlet should be wired back to its own 10 Amp minimum circuit breaker. This will prevent two problems:

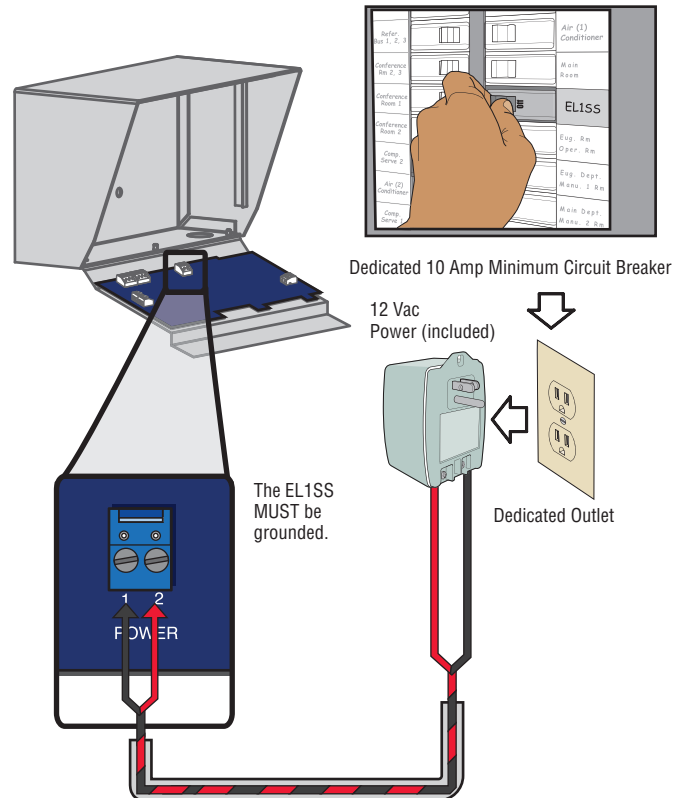
- Other equipment cannot introduce spikes, noise, surges, or dips into the power circuit.
- The system's operation will not be affected if any other equipment develops a short circuit across the power line.

Connect the transformer into a 110 Vac outlet after all connections have been made, any other type of outlet will cause damage to the system.

POWER WIRE TABLE

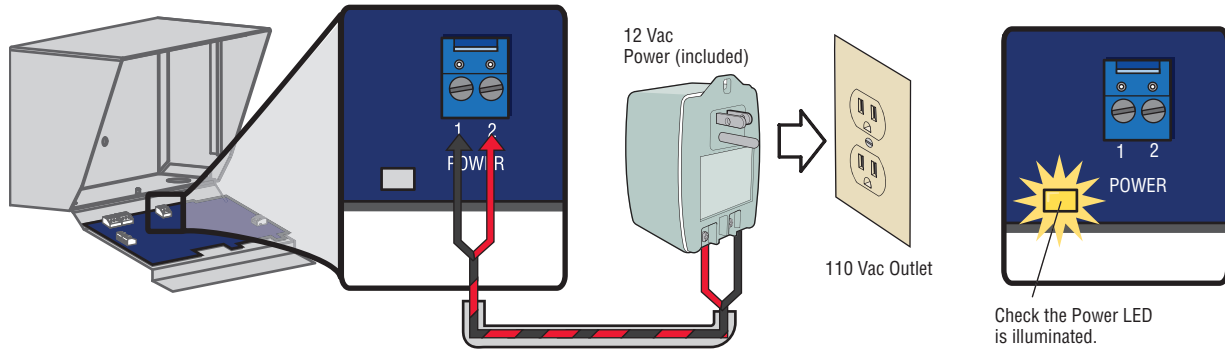
DISTANCE	AC POWER WIRE SIZE
Under 30 feet	18 AWG
30 - 75 feet	18 AWG
75 - 150 feet	18 AWG
150 - 250 feet	16 AWG
250 - 500 feet	12 AWG

**NOTE:** LiftMaster is not responsible for conflicts between the information listed in the above table and the requirements of local building codes. The information is for suggested use only. Check local building codes before installation.



## PLUG THE TRANSFORMER INTO THE OUTLET

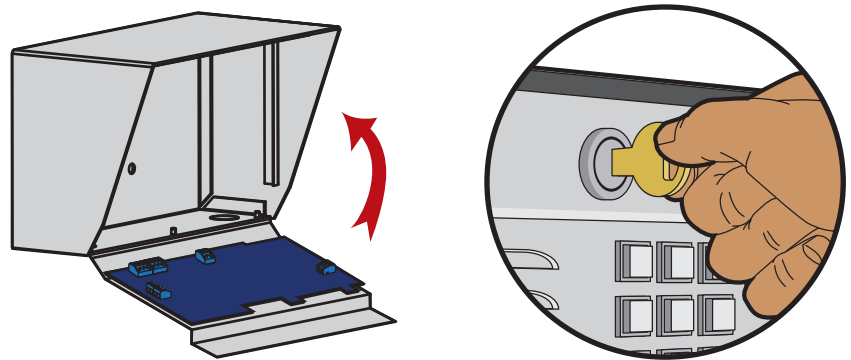
Plug the transformer into the 110 Vac outlet.



**NOTE:** Once power is applied, the EL1SS will begin to **click** to indicate that it is powered, and is waiting to be programmed for the unit's Master Code. The Master Code is used to unlock the programming functions of the EL1SS. The Master Code should not be distributed as a User Code.

## CLOSE THE UNIT

Rotate the front panel up. Lock the front panel.

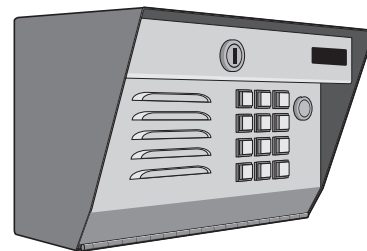


### SET THE UNIT MASTER CODE

Enter:    on the unit's keypad.

Enter 4 digit Master Code. Example: 1234.

“BEEP” “BEEP”



Write down the Master Code and store in a secure location. See page 23.

**NOTE:** The star (\*) button acts as a cancel command that will end any call, programming or access code key sequence.

## TEST GATE/DOOR RELAYS

### TEST RELAY 1

Enter 4 digit Master Code + 1 (Key). The “1” Key indicates the Relay to be triggered.     +

**NOTE:** Relay 1 status indicator LED will illuminate (Blue) to show activity when triggered.

### TEST RELAY 2

Enter 4 digit Master Code + 2 (Key). The “2” Key indicates the Relay to be triggered.     +

**NOTE:** Relay 2 status indicator LED will illuminate (Blue) to show activity when triggered.

## TEST THE TELEPHONE CONNECTIONS

1. Place a telephone call from the resident’s telephone to verify it is operating properly, then hang up the phone.

**NOTE:** To ensure proper function of the audio and authorization tones, keep the telephone handset at least 10 feet from the EL1SS during testing.

2. Press the “Call” key on the unit’s keypad. The telephone in the residence should ring.

**NOTE:** After the “Call” Button is pressed, the “Status” LED on the processor board will blink during transmission.

3. To test Relay 1 have someone answer the telephone and enter “\*9” (Star + 9). The EL1SS will disconnect the call as soon as the relay is activated. To test Relay 2 have someone answer the telephone and enter “\*5” (Star + 5). The EL1SS will disconnect the call as soon as the relay is activated.



## GENERAL INSTRUCTION

**NOTE:** Use the STAR Key "\*" to cancel any input.



PROGRAMMING INSTRUCTION	SYNTAX	KEYSTROKES
General Programming	Master Code + Command	1234 + 1 (12,123)
Code Programming	Master Code + Command + Code	1234 +1(12) + 1234
Relay Programming	Master Code + Command + Setting	1234 + 123 + 1234
Level Adjustment	Master Code + Command + Setting	1234 + 12 + 1-3

**NOTE:** Keypad commands are to be entered in a single string to result in success (indicated by double high success tone). Stop and go keystrokes will result in negative tones (low single and triple fail tones).

### CHANGE THE MASTER CODE

1. Enter the Master Code: [?] [?] [?] [?]
2. Enter the Program Code: [0] [9] The unit will beep.
3. Enter: [#] [#] [#]
4. Enter the new Master Code: [?] [?] [?] [?] The unit will beep.

**Write down the Master Code and store in a secure location.**

### ENABLE PARALLEL RELAY OUTPUT (DEFAULT)

1. Enter the Master Code: [?] [?] [?] [?]
2. Enter the Program Code: [0] [2] [1]

### ENABLE INDEPENDENT RELAY OUTPUT CONTROL

1. Enter the Master Code: [?] [?] [?] [?]
2. Enter the Program Code: [0] [2] [3]

### ENABLE TELCO (NO INTERCOM) MODE

Telco Mode is using the main telephone line for the unit's communications to the house or complex.

1. Enter the Master Code: [?] [?] [?] [?]
2. Enter the Program Code: [0] [4]

### ENABLE INTERCOM (NO TELCO) MODE

Intercom Mode is a stand alone system that allows communication between the unit and a resident's phone

1. Enter the Master Code: [?] [?] [?] [?]
2. Enter the Program Code: [0] [3]

### MICROPHONE SENSITIVITY

Allows the resident to hear the visitor at the unit, 1 = Low, 2 = Medium and 3 = High. **Default level is 2.**

1. Enter the Master Code: [?] [?] [?] [?]
2. Enter the Program Code: [0] [7]
3. Enter the Volume Level: [1] or [2] or [3]

### SPEAKER VOLUME

Allows the visitor to hear the resident at the unit, 1 = Low, 2 = Medium and 3 = High. **Default level is 2.**

1. Enter the Master Code: [?] [?] [?] [?]
2. Enter the Program Code: [0] [6]
3. Enter the Volume Level: [1] or [2] or [3]

### ADJUST RELAY OUTPUT TIME (RELAY 1)

The amount of time (in seconds) the relay remains active. **Default level is 0.5 seconds.**

1. Enter the Master Code: [?] [?] [?] [?]
2. Enter the Program Code: [0] [2] [4]
3. Enter the Output Time (in seconds): [?] [?] [?] [?]

#### Example:

0000 = 0.5 Seconds (Minimum)  
0010 = 10 Seconds  
8000 = 8000 Seconds (Maximum)

**ADJUST RELAY OUTPUT TIME (RELAY 2)**

The amount of time (in seconds) the relay remains active.  
**Default level is 0.5 seconds.**

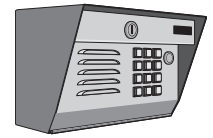
1. Enter the Master Code: - 2. Enter the Program Code:
- 3. Enter the Output Time (in seconds):

**Example:**

0000 = 0.5 Seconds (Minimum)

0010 = 10 Seconds

8000 = 8000 Seconds (2 hours & 13 minutes, Maximum)

**DISABLE VACATION (LOCK DOWN) MODE**

1. Enter the Master Code: - 2. Enter the Program Code:

**TRIGGER RELAY 1 AND CHANNEL 1**

1. Enter the Master Code: - 2. Enter the Program Code:

**TRIGGER RELAY 2 AND CHANNEL 2**

1. Enter the Master Code: - 2. Enter the Program Code:

**CODE SETUP**

The unit's Master Code is for owner/administrator level commands. The User Codes allow users to activate and latch relays 1 and 2 and to transmit radio commands on channels one and two.

**NOTE:** The User Code cannot be the same as the Master Code.

**ENTER A USER CODE NUMBERS**

1. Enter the Master Code: - 2. Enter the Program Code:  The unit will beep.
- 3. Enter New User Code:
- 4. Enter the Relay/Channel for the Code to control:  or  or no button is pressed.

**NOTE:** If no button is pressed in step 4, both relays/channels will activate simultaneously, when in parallel mode.

**CODE OPERATION****MASTER CODE OPERATIONS****TRIGGER RELAY 1 (ONLY)**

Enter the Master Code:

**NOTE:** Requires Relay 2 be in Independent Mode.

**ENABLE VACATION (LOCK DOWN) MODE**

Locks the system from all User Code activity.

1. Enter the Master Code: - 2. Enter the Program Code:

**USER CODE OPERATIONS****TRIGGER PROGRAMMED RELAY/CHANNEL FOR USER CODE**

Enter the User Code:

**DELETE USER CODE NUMBERS**

1. Enter the Master Code: - 2. Enter the Program Code:  The unit will beep.
- 3. Enter User Code to be deleted:

**ENTER A TEMPORARY (1 SHOT) USER CODE NUMBER**

The EL1SS holds 1 temporary User Code.

1. Enter the Master Code: - 2. Enter the Program Code:  The unit will beep.
- 3. Enter the Temporary User Code:
- 4. Enter the Relay for the Code to control:  or  or no button is pressed.

**NOTE:** If no button is pressed in step 4, both relays will activate simultaneously. Expires in 24 hours or after first use.



**ENGAGE PARTY MODE (RELAY 1)**

Party Mode will latch relay and trigger corresponding channel.

1. Enter the Master Code:
2. Enter the Program Code:

To disengage party mode: Enter a valid code into the EL1SS keypad or enter “\*9” into the local telephone.

**ENGAGE PARTY MODE (RELAY 2)**

Party Mode will latch relay and trigger corresponding channel.

1. Enter the Master Code:
2. Enter the Program Code:

To disengage party mode: Enter a valid code into the EL1SS keypad or enter “\*5” into the local telephone.

**NOTE:** Relay 2 must be in Independent Control Mode to engage Party Mode on relay 2. See page 13.

**TELEPHONE PROGRAMMING****ENABLE INTERCOM MODE**

Enter the command tone:

**ENABLE TELCO MODE**

Enter the command tone:

**ENABLE STANDARD (LONG) RING TONE**

Enter the command tone:

**ENABLE ALTERNATE (DUAL) RING TONE (DEFAULT)**

Enter the command tone:

**NOTE:** Alternate ring tone function may not work with all phones.

**CALL FORWARD PROGRAMMING****ENTER CALL FORWARDING TELEPHONE NUMBER**

Enter the command tone:

**VERIFY CALL FORWARDING NUMBER (VIA CALLER ID)**

Enter the command tone:

Hang up the phone - Wait for the ring.

**ERASE THE CALL FORWARDING NUMBER**

Enter the command tone:

**NOTE:** This command will also disable the call forwarding mode.

**ADJUST “PICK UP” RING COUNT**

1. Enter the command tone:

2. Enter the ring count:  through

**ENABLE ALTERNATE DTMF PROGRAMMING**

This feature changes the first programming digit from

to

Enter the command tone:

**DISABLE ALTERNATE DTMF PROGRAMMING**

Enter the command tone:

**ENABLE CALL FORWARDING**

Enter the command tone:

**DISABLE CALL FORWARDING**

Enter the command tone:

## TELEPHONE COMMANDS

### FROM LOCAL TELEPHONE

#### TRIGGER RELAY 1

Enter the command tone: \* 9

#### TRIGGER RELAY 2

Enter the command tone: \* 5

#### ENABLE PARTY MODE (RELAY 1)

Enter the command tone: \* \* 0 4  
To disengage party mode: Enter “\*9” into the local telephone.

#### ENABLE “DO NOT DISTURB” MODE

Enter the command tone: \* \* 1 1

#### DISABLE “DO NOT DISTURB” MODE

Enter the command tone: \* \* 1 2

### FROM FORWARDED TELEPHONE

#### ACCEPT CALL FROM UNIT ON REMOTE TELEPHONE

Enter the command tone: 0

Extend talk time: “Talk” or press 0

#### TRIGGER RELAY 1

Enter the command tone: \* 9

#### TRIGGER RELAY 2

Enter the command tone: \* 5

#### CALL WAITING

Press “Flash” once to answer guest, Once again to return to outside call on telco line, if \* 9 or \* 5 is not pressed. If \* 9 (relay 1) or \* 5 (relay 2) is pressed, the EL1SS will automatically return to the telco line.

**KEYPAD PROGRAMMING**

PROGRAMMING NUMBER	DESCRIPTION OF TASK	FACTORY SETTING	PROGRAMMING PROCEDURE
7	Delete User Code		Master Code (4 digits) + 7 + User Code that is to be deleted (4 digits)
9	Enter User Code		Master Code (4 digits) + 9 + New User Code (4 digits) + Relay/Channel Associated with the User Code (1 or 2)
03	Enable Intercom (No-Telco) Mode		Master Code (4 digits) + 03
04	Enable Telco Mode	Enabled	Master Code (4 digits) + 04
06	Speaker Volume	Level 2	Master Code (4 digits) + 06 + Volume Level (1 = Low, 2 = Medium or 3 = High)
07	Microphone Sensitivity	Level 2	Master Code (4 digits) + 07 + Volume Level (1 = Low, 2 = Medium or 3 = High)
09	Change the Master Code		Master Code (4 digits) + 09 + ### + New Master Code (4 digits)
51	Create Temporary (1 Shot) Code		Master Code (4 digits) + 51 + New Temporary (1 Shot) Code (4 digits) + Relay Associated with the User Code (1 or 2) (Expires after 24 hours.)
52	Enable Vacation (Lock Down) Mode	Disabled	Master Code (4 digits) + 52
53	Disable Vacation (Lock Down) Mode		Master Code (4 digits) + 53
54	Engage Party Mode (Relay 1)	Disabled	Master Code (4 digits) + 54
56	Engage Party Mode (Relay 2)	Disabled	Master Code (4 digits) + 56
021	Enable Parallel Relay Output	Enabled	Master Code (4 digits) + 021
023	Enable Independent Relay Output Control	Disabled	Master Code (4 digits) + 023
024	Adjust Relay Output Time (Relay 1)	.5 seconds	Master Code (4 digits) + 024 + Relay Output Time (0000-8000 seconds) <b>NOTE: Relay output time is ALWAYS 4 digits.</b>
025	Adjust Relay Output Time (Relay 2)	.5 seconds	Master Code (4 digits) + 025 + Relay Output Time (0000-8000 seconds) <b>NOTE: Relay output time is ALWAYS 4 digits.</b>

## DIRECT COMMANDS FROM THE KEYPAD

KEYSTROKES	ACTION
User Code + 1	Triggers Relay 1
User Code + 2	Triggers Relay 2

### AUDIO FEEDBACK FROM THE EL1SS:

- 1 Low Tone Beep = Failure
- 2 Two High Tone Beeps = Valid sequence
- 3 Low Tone Beep = Error or invalid sequence

**NOTE:** Use the STAR Key “\*” to cancel any input.

**NOTE:** Keypad commands are to be entered in a single string to result in success (indicated by double high tone). Stop and go keystrokes will result in negative tones (low single and triple fail tones).

## TELEPHONE PROGRAMMING

PROGRAMMING NUMBER	DESCRIPTION OF TASK	FACTORY SETTING	PROGRAMMING PROCEDURE
**01	Enable Call Forwarding	Disabled	**01
**02	Disable Call Forwarding		**02
**03	Enable Intercom Mode	Disabled	**03
**06	Verify Call Forwarding Number (Via Caller ID)	Disabled	**06
**07	Enable Telco Mode	Disabled	**07
**#8	Erase Call Forwarding Number		**#8
**10	Adjust Ring Count	5	**10 + Ring Count (2-5)
**13	Enable Alternate DTMF Programming	Disabled	**13
**14	Enable Standard (Long) Ring Tone	Enabled	**14
**15	Enable Alternate (Dual) Ring Tone	Enabled	**15
#*16	Disable Alternate DTMF Programming		**16
*# Call Forwarding Number #	Enter Call Forwarding Telephone Number		*# + Telephone Number (Up to 14 digits) + #

**DIRECT COMMANDS FROM THE LOCAL TELEPHONE**

PROGRAMMING NUMBER	DESCRIPTION OF TASK	FACTORY SETTING	PROGRAMMING PROCEDURE
*5	Triggers Relay 2		*5
*9	Triggers Relay 1		*9
**04	Enable Party (Latched) Mode Relay 1		**04
**05	Disable Party (Latched) Mode Relay 1		
**11	Enable "Do Not Disturb" Mode	Disabled	**11
**12	Disable "Do Not Disturb" Mode		**12

**DIRECT COMMANDS FROM THE FORWARDED TELEPHONE**

PROGRAMMING NUMBER	DESCRIPTION OF TASK	FACTORY SETTING	PROGRAMMING PROCEDURE
0	Accepts Call From The Unit (Also Extends Talk Time)		0
*5	Triggers Relay 2		*5
*9	Triggers Relay 1		*9

**NOTE:** Use the STAR Key "\*" to cancel any input.

**NOTE:** Keypad commands are to be entered in a single string to result in success (indicated by double high success tone). Stop and go keystrokes will result in negative tones (low single and triple fail tones).

# REPAIR PARTS

PART NUMBER	DESCRIPTION
KSN1600341B	Bypass board
K002B0821-1	Transformer 16.5 VDC 2.5 A
K002B0799-3	Keys
K002B1597-1	Keypad
K001D7121-1	Main Board
K002B1598	Speaker
K002B0799-4	Lock and keys
K101C0232-1	Call Button

## EL1SS MASTER CODE

Write down the Master Code and store in a secure location.

--	--	--	--

# WARRANTY

LiftMaster ("Seller") warrants to the first purchaser of this product, for the structure in which this product is originally installed, that it is free from defect in materials and/or workmanship for a period of one year from the date of purchase.

The proper operation of this product is dependent on your compliance with the instructions regarding installation, operation, maintenance and testing. Failure to comply strictly with those instructions will void this limited warranty in its entirety.

If, during the limited warranty period, this product appears to contain a defect covered by this limited warranty, call 1-800-528-2806 before dismantling this product. Then send this product, pre-paid and insured, to our service center for warranty replacement. Products returned to Seller for warranty replacement, which upon receipt by Seller are confirmed to be defective and covered by this limited warranty, will be replaced (at Seller's sole option) at no cost to you and returned pre-paid. Defective parts will be replaced with new or factory-rebuilt parts at Seller's sole option.

THIS LIMITED WARRANTY IS IN LIEU OF ANY OTHER WARRANTIES, EXPRESS OR IMPLIED, INCLUDING ANY IMPLIED WARRANTY OF MERCHANTABILITY OR FITNESS FOR A PARTICULAR PURPOSE OR OTHERWISE, AND OF ANY OTHER OBLIGATIONS OR LIABILITY ON SELLER'S PART. THIS LIMITED WARRANTY DOES NOT COVER NON-DEFECT DAMAGE, DAMAGE CAUSED BY IMPROPER INSTALLATION, OPERATION OR CARE (INCLUDING, BUT NOT LIMITED TO ABUSE, MISUSE, FAILURE TO PROVIDE REASONABLE AND NECESSARY MAINTENANCE, UNAUTHORIZED REPAIRS OR ANY ALTERATIONS TO THIS PRODUCT), LABOR CHARGES FOR REINSTALLING A REPAIRED OR REPLACED UNIT, PROBLEMS RELATED TO INTERFERENCE, OR REPLACEMENT OF BATTERIES.

UNDER NO CIRCUMSTANCES SHALL SELLER BE LIABLE FOR CONSEQUENTIAL, INCIDENTAL OR SPECIAL DAMAGES ARISING IN CONNECTION WITH USE, OR INABILITY TO USE, THIS PRODUCT. IN NO EVENT SHALL SELLER'S LIABILITY FOR BREACH OF WARRANTY, BREACH OF CONTRACT, NEGLIGENCE OR STRICT LIABILITY EXCEED THE COST OF THE PRODUCT COVERED HEREBY. NO PERSON IS AUTHORIZED TO ASSUME FOR US ANY OTHER LIABILITY IN CONNECTION WITH THE SALE OF THIS PRODUCT.

Some states do not allow the exclusion or limitation of consequential, incidental or special damages, so the above limitation or exclusion may not apply to you. This limited warranty gives you specific legal rights, and you may also have other rights which vary from state to state.

## **HOW TO ORDER REPAIR PARTS**

### **DEVANCO CANADA**

19192 HAY ROAD, UNIT Q  
SUMMERSTOWN, ON K0C 2E0

TOLL FREE: 855-931-3334  
[www.devancocanada.com](http://www.devancocanada.com)

### **WHEN ORDERING REPAIR PARTS PLEASE SUPPLY THE FOLLOWING INFORMATION:**

- ✓ **PART NUMBER**
- ✓ **DESCRIPTION**
- ✓ **MODEL NUMBER**

NOTICE: To comply with FCC and or Industry Canada rules (IC), adjustment or modifications of this receiver and/or transmitter are prohibited, except for changing the code setting or replacing the battery. THERE ARE NO OTHER USER SERVICEABLE PARTS.  
Tested to Comply with FCC Standards FOR HOME OR OFFICE USE. Operation is subject to the following two conditions: (1) this device may not cause harmful interference, and (2) this device must accept any interference received, including interference that may cause undesired operation.

This document is protected by copyright and may not be copied or adapted without the prior written consent of LiftMaster. This documentation contains information proprietary to LiftMaster and such information may not be distributed without the prior written consent of LiftMaster. The software and firmware included in the LiftMaster product as they relate to this documentation are also protected by copyright and contain information proprietary to LiftMaster.