

# One-Button Remote Transmitter Programming Instructions

## ⚠ WARNING



### Moving door can cause serious injury or death.

- **Do Not** install transmitter unless the door operator's **safety reverse** works as required by the door operator's manual.
- Wall control must be mounted in sight of door.
- **Keep people clear** of opening while door is moving.
- **Do Not** allow children to play with the transmitter or door operator.

If **safety reverse** does not work properly:

- **Close door then disconnect operator** using the manual release handle.
- **Do Not** use transmitter or door operator.
- Refer to Door and Door Operator Owner's Manuals before attempting any repairs.

This Remote comes from the factory designed to operate any Genie® Intellicode® type garage door opener.

### A. For use with **Learn Code Button equipped** Openers (1995 to Present) —

**ON REMOTE** > 1. Remove the battery's protective film by pulling it out the bottom of the remote.

**ON POWERHEAD** > 2. Locate the Learn Code Button and Learn Code Indicator LED on your opener's powerhead (**FIG. 1A**) (See owner's manual).



3. Press and release the Learn Code Button—the Red Learn Code LED will blink rapidly.

**ON REMOTE** > 4. Press and release the Remote Button, (**FIG. 2**)—the Learn Code LED will stay on (stops blinking)



5. Press and release the Remote Button again—the Learn Code LED will turn off.

6. Press and release the Remote Button again—the **Door Opener will run.**

### THE REMOTE IS NOW PROGRAMMED.

Repeat as necessary for additional remotes.

### B. For use with **Program/Set Button equipped** Openers (2010 to Present) —

**ON REMOTE** > 1. Remove the battery's protective film by pulling it out the bottom of the remote.

**ON POWERHEAD** > 2. Locate the Program/Set Button and Programming Indicator LEDs on your opener's powerhead (**FIG. 1B**) (See owner's manual).



3. Press the Program/Set button until the round LED will turn blue.

4. Release the Program/Set button—the long LED will blink purple.

**ON REMOTE** > 5. Press and release the Remote Button, (**FIG. 2**)—the long LED will turn steady purple (stops blinking).



6. Press and release the Remote Button again—both LEDs will blink blue and turn off.

7. Press and release the remote button again—the **Door Opener will run.**

### THE REMOTE IS NOW PROGRAMMED.

Repeat as necessary for additional remotes.

### C. Replacing the Battery.

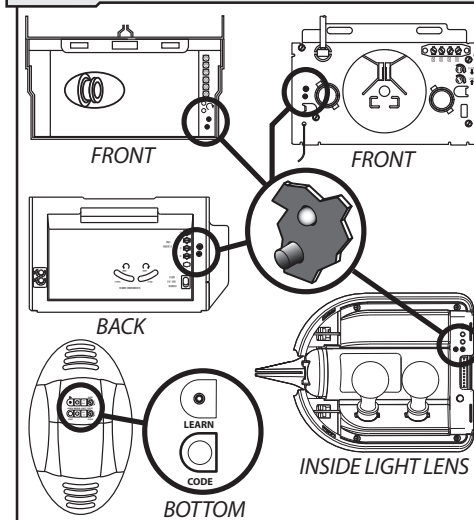
(Programming is not affected by battery replacement.)

1. Slide the Battery Cover off the front of the remote (**FIG. 2**).
2. Slide the old battery toward the bottom of the remote and out.
3. Properly discard the old battery.
4. Slide a new (CR 2032 size) battery into position and slide the Cover back on.

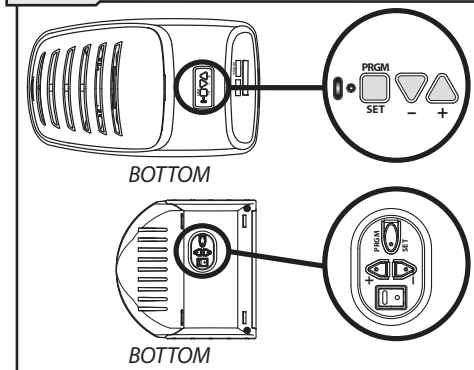
### POWERHEADS (for various models)

Circle shows location of Learn Code Button and LED or Program/Set button and LEDs as appropriate.

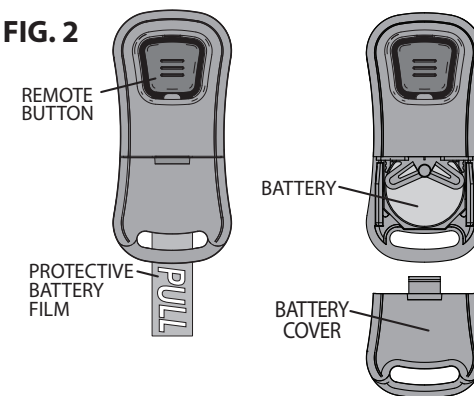
**FIG. 1A—LEARN CODE BUTTON OPENERS**



**FIG. 1B—PROGRAM/SET BUTTON OPENERS**



**FIG. 2**



**FCC & IC CERTIFIED** This device complies with FCC Part 15 and Industry Canada license exempt RSS standard(s). Operation is subject to the following two conditions: (1) this device may not cause interference, and (2) this device must accept any interference, including interference that may cause undesired operation of the device. This equipment generates, uses and can radiate radio frequency energy and, if not installed and used in accordance with the instructions, may cause harmful interference to radio communications. However, there is no guarantee that interference will not occur in a particular situation. If this equipment does cause harmful interference to radio or television reception, which may be determined by turning the equipment OFF and ON, the user is encouraged to try and correct the interference by one or more of the following measures: (a) Re-orient or relocate the receiver antenna, (b) Increase the separation between the opener and receiver, (c) Connect the opener into an outlet on a circuit different from that to which the receiver is connected, and (d) Consult your local dealer. Any modification or changes to this equipment which are not expressly approved by the manufacturer could void the user's authority to operate the equipment. This device complies with the Health Canada's Safety Code. The installer of this device should ensure that the RF radiation is not emitted in excess of the Health Canada's requirement. Information can be obtained at: <http://www.hc-sc.gc.ca/ewh-semt/radiation/cons/wifi/index-eng.php>

For more information, please visit [www.devancocanada.com](http://www.devancocanada.com) or call toll free at 855-931-3334

***HOW TO ORDER  
REPAIR PARTS***

**DEVANCO CANADA**

19192 HAY ROAD, UNIT Q  
SUMMERSTOWN, ON K0C 2E0

TOLL FREE: 855-931-3334  
[www.devancocanada.com](http://www.devancocanada.com)

**WHEN ORDERING REPAIR PARTS  
PLEASE SUPPLY THE  
FOLLOWING INFORMATION:**

- ✓ PART NUMBER
- ✓ DESCRIPTION
- ✓ MODEL NUMBER