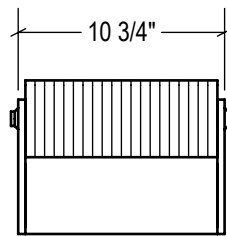
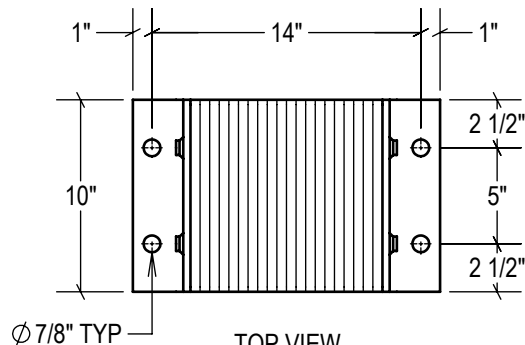


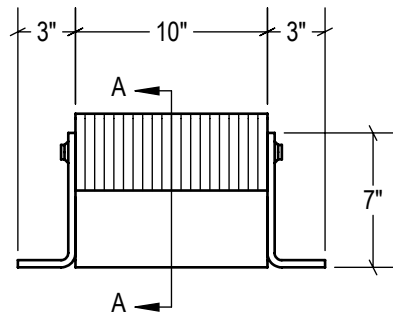
P1 CONFIG.



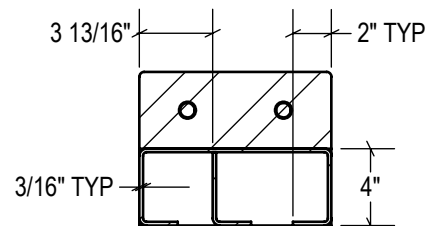
P2 CONFIG.



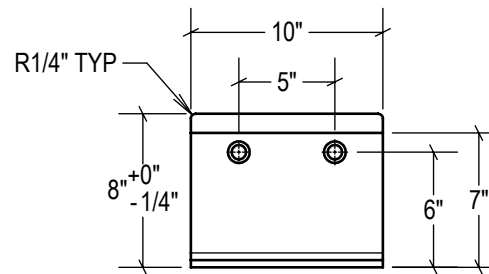
TOP VIEW



FRONT VIEW

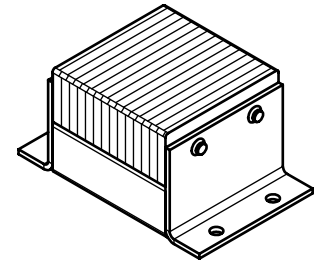


SECTION A-A

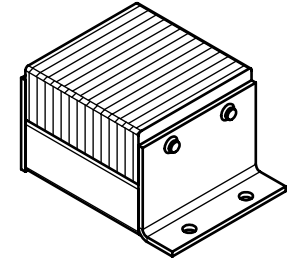


SIDE VIEW

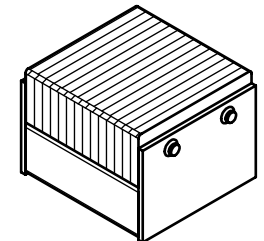
STANDARD  
model #: LB810-14  
part #: 24-2988  
Bolted (2) Sides



P1 CONFIG.  
model #: LB810-14/P1  
part #: 24-2989  
Welded (1) Side



P2 CONFIG.  
model #: LB810-14/P2  
part #: 24-2990  
Welded (2) Sides



ESTIMATED GROSS SHIPPING WEIGHT = 52 LBS

SPECIFICATIONS:

LAMINATED PADS SHALL BE MADE FROM REINFORCED TRUCK TIRES CUT TO 4.125" x 10" PUNCHED AND ASSEMBLED THROUGH 3/4" RODS BETWEEN FORMED 3/8" THICK STEEL UNDER 1,500LBS OF PRESSURE. FINISH OF EXPOSED METAL SHALL BE PAINTED WITH WATER-BASED AND LEAD-FREE PAINT OR HOT-DIPPED GALVANIZED (OPTIONAL).

ALL DIMENSIONS ARE  $\pm 1/8"$  UNLESS SPECIFIED OTHERWISE

DRAWN BY:  
**T.CHUNG**

DATE:  
**2018-12-12**

CHECKED BY:

DATE:



SIZE:  
**A**

DESCRIPTION:

**LAMINATED RUBBER BUMPER LB810-14**

SCALE:  
**1:10**

SHEETS:  
**1 of 1**

DRAWING NUMBER:  
**MKT\_LB810-14**

REV:  
**1**

**DEVANCO**  
CANADA