

MICANAN MV00297 WIRELESS KEYPAD INSTALLATION GUIDE



WARNING: MICANAN MV00297 Wireless Keypad is compatible with Micanan Full Function Smart 10.0 Logic Board

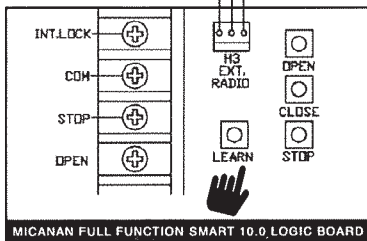
PACKAGE CONTENTS

- Installation guide
- 2 mounting screws
- Micanan MV00297 Wireless Keypad (9 volt battery included)

PROGRAMMING *

* NOTE: Unit can be programmed with garage door in either up or down position.

- Press and hold the "LEARN" button on the operator control board until the LED turns ON (indicating that the Operator is ready to learn the Wireless Keypad). The opener will remain in the learn mode for about 15 seconds.
- Open the cover of the Wireless Keypad, then push the **ON/OFF RESET** button of the Wireless Keypad.
The keypad will light indicating it has been activated and is waiting for commands (illumination may not be visible in direct sunlight).



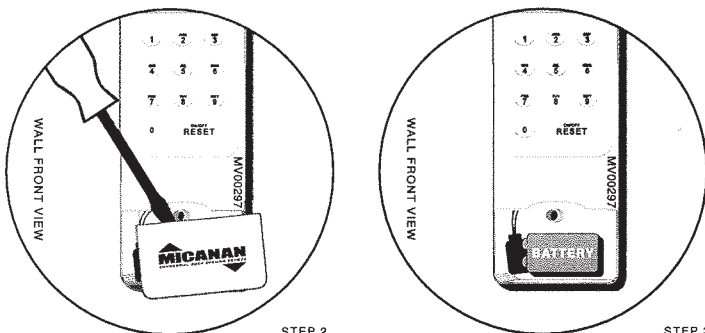
NOTE: If you do not start step 3 within 10 seconds after step 2, the wireless keypad unit will deactivate and you will have to start this step again.

- Enter the desired four-digit PIN number. The keypad light will blink twice and the LED on the Operator logic board will blink and then turn OFF.
Programming is now complete.

BATTERY REPLACEMENT *

* NOTE: Replace the 9 volt battery when keypad light becomes dim or does not light up.

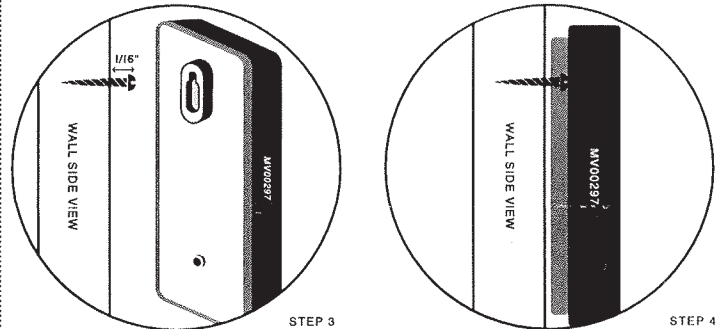
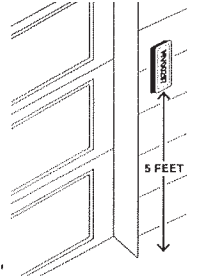
- Raise Wireless Keypad Cover to expose battery cover.
- Snap open battery cover with a coin or flat edge of a screwdriver and remove old battery.



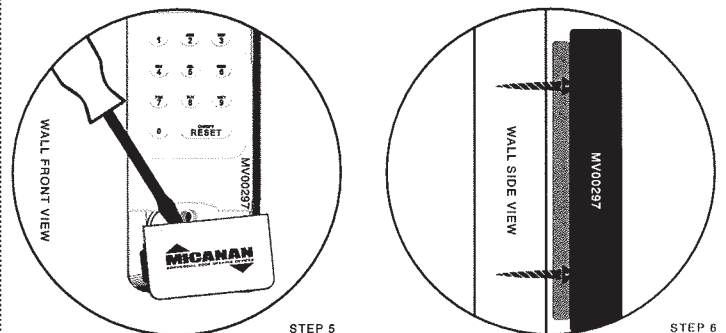
- Replace 9V battery, then re-install battery cover.
Battery replacement is now complete.

MOUNTING

- Choose a convenient location that does not interfere with the normal opening and closing operation of the door but within sight of the door.
- Two screws are included for proper mounting into wood or other similar material. A 5/64" pilot hole may need to be drilled for the mounting screws. If mounting to other materials consult a qualified building or hardware specialist for the proper hardware to ensure secure mounting.
- Insert top screw into top pilot hole leaving head of screw 1/16" away from wall.



- Slide and lock back keyhole slot over exposed screw and position unit vertically.
- Snap open battery cover with a coin or flat edge of a screwdriver and remove battery door to expose bottom screw mounting hole.



- Insert bottom screw and tighten and re-install battery door.
Mounting is now complete.

• M A N U F A C T U R E D I N T A I W A N •

For more information, please visit www.devancocanada.com or call toll free at 855-931-3334

***HOW TO ORDER
REPAIR PARTS***

DEVANCO CANADA

19192 HAY ROAD, UNIT Q
SUMMERSTOWN, ON K0C 2E0

TOLL FREE: 855-931-3334
www.devancocanada.com

**WHEN ORDERING REPAIR PARTS
PLEASE SUPPLY THE
FOLLOWING INFORMATION:**

- ✓ PART NUMBER
- ✓ DESCRIPTION
- ✓ MODEL NUMBER