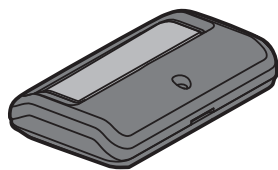


LiftMaster®

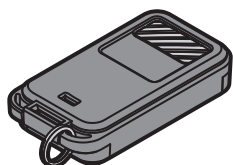
PASSPORT

PASSPORT LITE REMOTE CONTROLS

Model PPLV1



Models PPLK1 and PPLK1PH

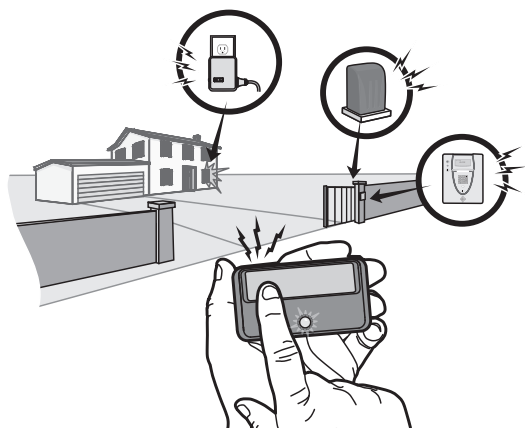


NOTE: The images are for reference and your product may look different.

INTRODUCTION

The Passport LITE is a credentialed remote control. The Passport LITE remote control is a versatile remote control that can be used on access control systems, commercial door operators, gate operators, and external receivers (Models PPWR, 850LM, 860LM, STAR1000) that use Security+ 2.0™ technology.

NOTE: PassportLITE credentialed remote controls are not compatible with CPWR, CPWR3, RFMODKT, and RFMODKT3 Passport products.



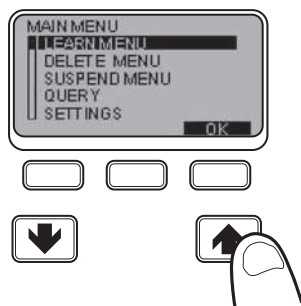
PROGRAMMING

Depending on your product, the LEARN button or LCD menu will be used to program the remote control.

If programming to an access control system or gated entry, contact your property manager or LiftMaster® dealer for assistance with any programming or operating instructions.

NOTE: Passport Lite remote controls are NOT compatible with residential garage door openers.

1. Locate the LEARN button on your product or the PROGRAM button on the LCD (if applicable).



WARNING

To prevent possible SERIOUS INJURY or DEATH from a moving gate or garage door:

- ALWAYS keep remote controls out of reach of children. NEVER permit children to operate, or play with remote controls.
- Activate gate or door ONLY when it can be seen clearly, is properly adjusted, and there are no obstructions to door travel.
- ALWAYS keep gate or garage door in sight until completely closed. NEVER permit anyone to cross path of moving gate or door.

2. Press and release the yellow LEARN button on your product or the PROGRAM button on the LCD. **NOTE:** The button color on commercial products may vary.
3. Press and hold the remote control button you wish to use until your product's programming LED turns off
4. To test, press the programmed button on the remote control and the product will activate.

Please refer to your access control system owner's manual for instructions on programming the PassportLITE credentialed remote controls.

HOW TO USE THE REMOTE CONTROL

Press and hold the button down until the door or gate starts to move. For key chain remote controls with a proximity sensor, hold the remote control 1-2" away from the reader face and wait for a confirmation beep or LED from the reader. Operation of the proximity sensor varies depending on the access control system. For additional information refer to the owner's manual for the access control system.

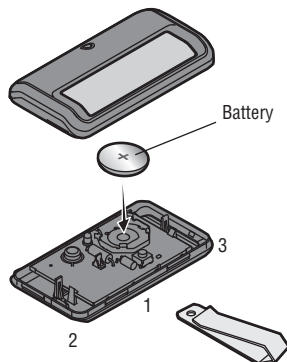
For more information, visit www.devancocanada.com
or call toll free at 855-931-3334

THE REMOTE CONTROL BATTERY

To replace battery, open the case as shown. Insert battery positive side up (+). Replace the battery with only 3V CR2032 coin cell battery. Dispose of old battery properly.

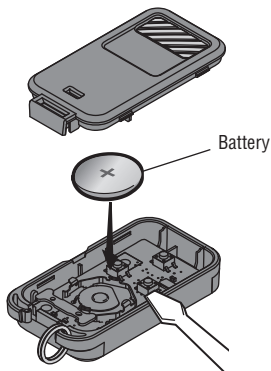
VISOR REMOTE

Pry open the case first in the middle (1), then at each side (2 and 3) with the visor clip.



KEY CHAIN REMOTE

Pry open the case with a screwdriver blade.



⚠ WARNING

To prevent possible SERIOUS INJURY or DEATH:

- NEVER allow small children near batteries.
- If battery is swallowed, immediately notify doctor.

To reduce risk of fire, explosion or chemical burn:

- Replace ONLY with 3V CR2032 coin batteries.
- DO NOT recharge, disassemble, heat above 212° F (100° C) or incinerate.

NOTICE: To comply with FCC and or Industry Canada rules (IC), adjustment or modifications of this receiver and/or transmitter are prohibited, except for changing the code setting or replacing the battery. THERE ARE NO OTHER USER SERVICEABLE PARTS.

Tested to Comply with FCC Standards FOR HOME OR OFFICE USE. Operation is subject to the following two conditions: (1) this device may not cause harmful interference, and (2) this device must accept any interference received, including interference that may cause undesired operation.

REPLACEMENT PARTS

3V CR2032 Lithium battery	10A20
Visor Clip	29B137

ONE YEAR LIMITED WARRANTY

The Chamberlain Group, Inc. warrants to the first consumer purchaser of this product that it is free from defect in materials and/or workmanship for a period of 1 year from the date of purchase.

HOW TO ORDER REPAIR PARTS

DEVANCO CANADA

19192 HAY ROAD, UNIT Q
SUMMERSTOWN, ON K0C 2E0

TOLL FREE: 855-931-3334

www.devancocanada.com

**WHEN ORDERING REPAIR PARTS
PLEASE SUPPLY THE FOLLOWING INFORMATION:**

- ✓ PART NUMBER
- ✓ DESCRIPTION
- ✓ MODEL NUMBER