

MONITORED RETRO-REFLECTIVE PHOTO EYE

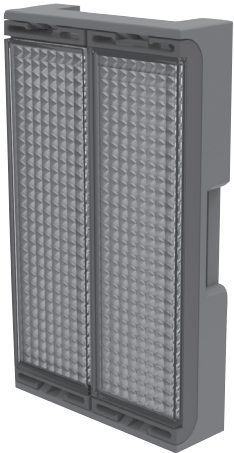
COMMERCIAL DOOR OPERATOR

CPS-RPEN4

MODEL



CPS-RPEN4 utilizes an armored power cable that eliminates the need for conduit while meeting all local electrical codes. The cable also allows for easy connection to the LiftMaster 3-Button Station when located next to the door.



Reflector is easy to install and does not require wiring, power, or additional tools. The reflector provides range up to 50ft. wide.

PREPARE. INSTALL. COMPLETE. INSTALLATION AT EASE.

The new LiftMaster® Monitored Retro-Reflective Photo Eye model CPS-RPEN4 makes installs faster and simpler.

The built in polarized beam technology offers exceptional reliability by reducing interference from shiny objects, it is also powerful enough to detect obstructions and communicate with the reflector up to 50 feet away in most commercial door applications.

This simple turnkey solution only requires power on one side of the installation! By eliminating the need to run wiring from the top of the door to the reflector, this single sided photo eye will help you complete more installations in less time and reduces overall installation time by an average of 30%

With the CPS-RPEN4, LiftMaster delivers the first monitored UL 325 compliant retro-reflective photo eye for installers who need smart equipment and quick installation.

Setting up the device involves three easy steps: **preparation**, **installation** and adjustment of the photo eye to ensure **completion**.

For more information
visit www.devancocanada.com

LiftMaster®

Standard Features

- **Single Sided**
Less wiring for simpler and faster installation.
- **Polarized Beam Technology**
Polarized beam technology sends and receives beam through two polarized filters to avoid interferences with shiny objects
- **Adjustable Photo Eye Assembly**
Provides additional flexibility in installation alignment.
- **Armored Power Cable**
Connects easily to the LiftMaster® 3-button station for power.
- **NEMA4 Waterproof Enclosure**
Protects electronics from the environment.

Compatibility

CPS-RPEN4 is compatible with the following Commercial Door Operators: Logic 4, Medium Duty, FDC, FDCL, FDOA and FDOB.

Convenience

LiftMaster model 65-7WIREL, Seven Conductor is an ideal complement to this photo eye, making the installation process even easier. With the Seven Conductor model, accessories can be added where you want and when you want. You will have sufficient wire leads to install multiple 3-button stations, Maintenance Alert System (MAS) LED indicator light, and the CPS-RPEN4 with one simple connection to the operator head.

Specifications

Technical Data Range

Version: 15m / 50 ft

Outdoor Rating

IP65, NEMA4X

Temperature Range

-30 – 60°C, -22 – 140°F

Dimensions

50.8mm x 87.12mm x 15.24mm
1.4" x 3.8" x 1.6"

Reflector Dimensions

35.56mm x 96.52mm x 40.64mm
2" x 3.43" x 0.6"

Terminal Interface

Monitored 2-Wire

Response time

30 ms

Wake Up Delay

500 ms

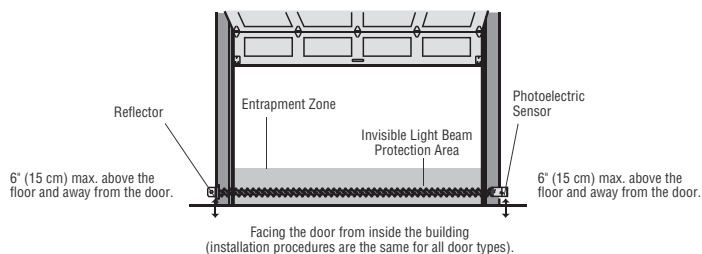
Connection

2m cable, fine stranded,
crimp terminals end
wire size 0.25 mm2

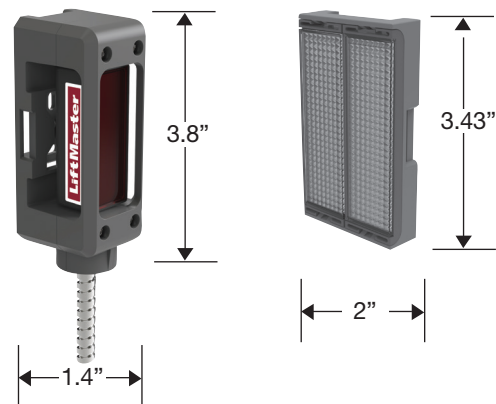
Polarized beam with visible feedback for maximal detection reliability

The monitoring technology features a visible beam and visible feedback to aid in alignment confirmation during installations. The light technology makes the sensor resilient to ambient light as well as other infrared sensors that can often be found around commercial doors. The unit includes an adjustable photo eye assembly for alignment flexibility allowing for alignment across two planes and up to 50ft.

COMMERCIAL DOOR ENTRAPMENT ZONE



Dimensions



For more information
visit www.devancocanada.com

LiftMaster®



THE CHAMBERLAIN GROUP, INC.
845 Larch Avenue • Elmhurst, IL 60126



Chamberlain reserves the right to make design or specification changes without notice.
©2013 The Chamberlain Group, Inc. Printed in U.S.A. 1/13 LMCDCARPEN