

# REVOLUTIONIZE.

Experience game-changing reliability and ultra-quiet operation.



DEALER PLAYBOOK HCTDCU  
SPECIALTY OVERHEAD OPERATOR

**LiftMaster**

For more information please visit  
[www.devancocanada.com](http://www.devancocanada.com) or call toll free at 855-931-3334



# ENGINEERED FOR SAVINGS.

The smooth operation of the new DC operator reduces wear and costly unplanned service calls in heavy-traffic parking applications.



## LASTING PERFORMANCE

Smooth start/stop and mid-travel reversal reduce stress on moving parts.



## CERTIFIED CONFIDENCE

UL 325 Listed for both door and gate applications.



## WARRANTY

Our extensive 5-year warranty boosts customer confidence.

## Battery Backup

**NONSTOP ACCESS**  
Ensures that residents can always get in and out with up to 112 open/close cycles.



## CORROSION RESISTANT

PREMIUM RAIL FINISH PROVIDES MAXIMUM RUST PROTECTION IN OPEN-AIR ENVIRONMENTS (AVAILABLE RAIL LENGTHS: 8, 10 AND 12 FEET).

## THE BOTTOM LINE:

### MINIMUM VALUE

**Reduced callbacks:** Smooth start/stop reduces costly service trips within warranty.

**\$75**  
PER CALL

**Quicker installations:** Real-time diagnostics eliminate guesswork for efficient troubleshooting.

**\$75**  
PER CALL

**Fewer unplanned service calls:** Battery Backup maintains operation during power outages, so you stay on schedule.

**\$75**  
PER CALL

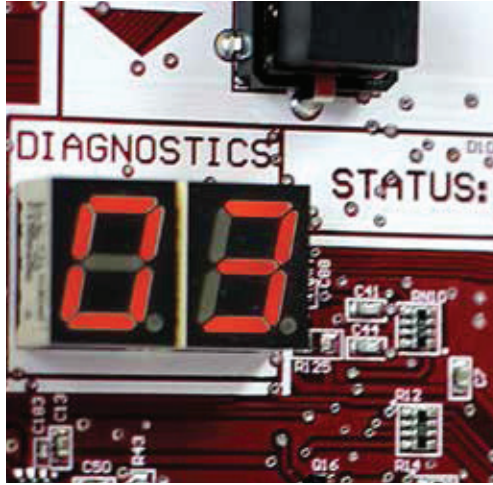
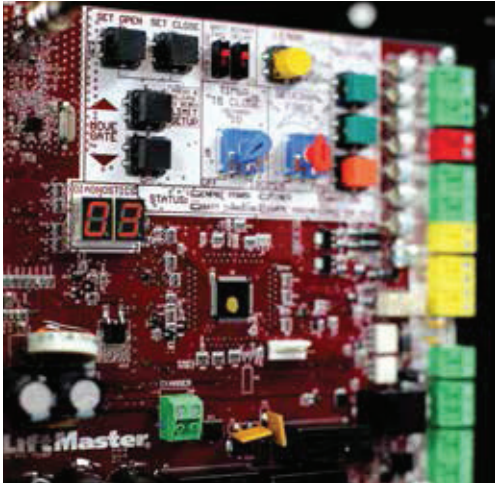
**Diminished liability:** The ONLY specialty overhead operator that is UL 325 Listed for door and gate applications.

PRICELESS



# ELIMINATE GUESSWORK.

Our intuitive, common control boards help you install and troubleshoot more efficiently, so you can move on to your next job.



## QUICKER DIAGNOSIS

Provides code sequences that pinpoint problem areas, so you can quickly find a solution.

▶ VISIT OUR EXPANSIVE LIBRARY OF SUPPORT AND TROUBLESHOOTING VIDEOS AT [LIFTMASTER.COM/UL325GATES](https://www.liftmaster.com/ul325gates)

# ENHANCE THE SYSTEM.

Increase safety and convenience with customized solutions.

## ACCESS CONTROL

Provide easy-to-manage tenant access.

**GATE AND DOOR:**  
EL2000SS AND KPR2000



## ENTRAPMENT PROTECTION

Safeguard all hazard zones with added UL 325 compliant coverage.

**GATE:** MONITORED WIRELESS EDGE KIT AND EDGES  
**DOOR:** OES SERIES DOOR EDGE KITS



## MONITORED SAFETY

Ensure that the area is clear to close.

**GATE:** CPSUN4G (INCLUDED)  
**DOOR:** CPS-OPEN4



## TRAFFIC MANAGEMENT

Signal that the entrance is clear.

**GATE AND DOOR:** YSG12-24LED



## VEHICLE DETECTION

Identify vehicles for convenient access.

**GATE AND DOOR:** LOOPDETLM



**LiftMaster**



# KEY TO SALES.

Create a value-added selling story using these proven talking points that resonate with community managers.

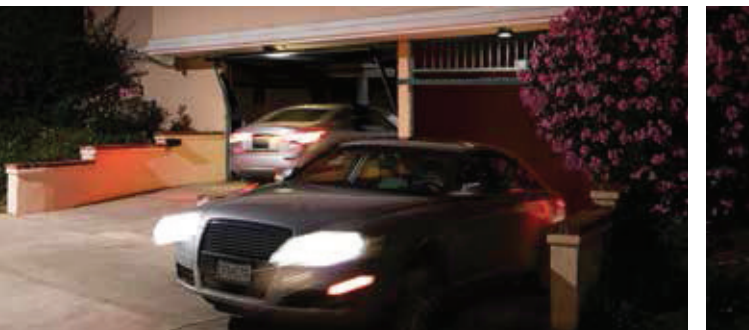
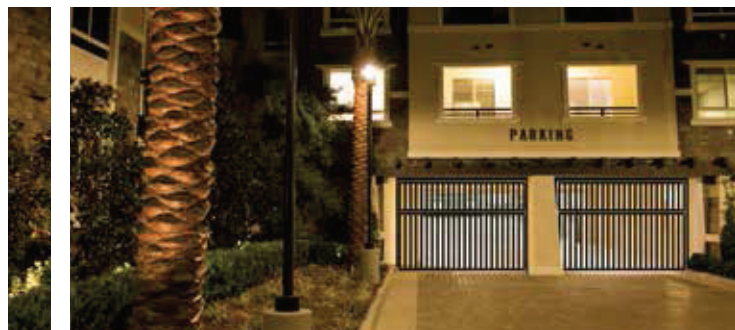


## DO YOU WANT TO AVOID COSTLY SYSTEM BREAKDOWNS?

**Smooth start/stop** and sturdy DC motor design reduce wear and unplanned service calls, saving you time and money.

## DO TENANTS LIVE OR WORK IN CLOSE PROXIMITY TO THE OPERATOR?

The **powerful DC motor** and **noise-isolation system** lead the industry in ultra-quiet operation to ensure full occupancy of spaces near the garage.



## DOES YOUR PROPERTY EXPERIENCE HIGH-TRAFFIC SURGES?

**Selectable speed control** safely keeps traffic flowing with open speeds up to 25% faster than standard operators—11 inches per second.

## IS YOUR PROPERTY PRONE TO POWER OUTAGES?

**Battery Backup** operates for up to 112 open/close cycles on standby power, so your tenants always have uninterrupted access.



## ORDER YOUR SOLUTION TODAY.

Dealer.LiftMaster.com | 800.323.2276  
Contact Your LiftMaster® Sales Representative

All trademarks and registered trademarks are the property of their respective owners.  
UL and the UL logo are trademarks of UL LLC © 2016 All Rights Reserved.  
LMGTENPBHCTU 9/16

# LiftMaster®

For more information please visit  
[www.devancocanada.com](http://www.devancocanada.com)  
or call toll free at 855-931-3334