

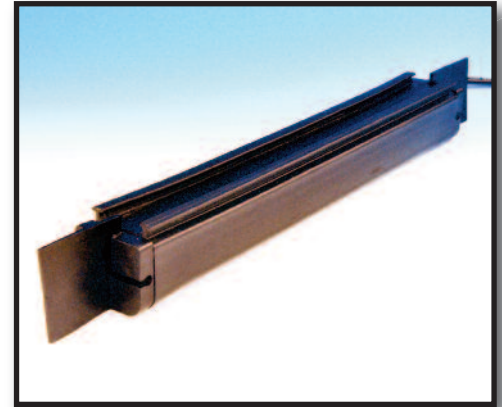
SensingEdge

Applications

- **Commercial Sectional Doors**
- **Material Handling Systems**

About the ME113...

This pressure sensitive electric edge can be adapted to suit a wide variety of applications. It is manufactured to user specifications for length, sensitivity and outlet location. When touch activated, the ME113 sends an immediate signal to stop and/or reverse operations depending upon your particular application. This Sensing Edge retrofits easily to 1 1/4" to 1 1/2" sectional doors with one of our mounting channels.



OPTIONS:

- 4 Wire
- Soft Ends • Coil Cord attached
- Retracting Reel
- 4 wire intrinsically safe controller (FSIS-35-4)
- Air-Wave (MAW113) • Pneumatic (MEP113)
- Mounting Channel

TECHNICAL SPECIFICATIONS:

Color:	Black
Length:	per specification to nearest 1/4
Lead Wire:	SJTO, 22 gauge, 2ft. length
Sensitivity:	nominal 7-12 lbf
Electrical Diagram:	2 wire N.O. configuration
Electrical Maximum:	24 volt AC or DC, 1/2 amp
Mechanical Diagram:	See drawings on reverse side
Contact Element:	Alumaglas®
Materials:	Extruded Flexible PVC
Mounting Channel:	High - Density PVC
Temperature Range:	-30°F to +155°F
Wire Outlet Location:	Universal, Right side, Left side or End

FUNCTIONAL BENEFITS:

- Touch Sensitive Signalling
- Small Profile
- Easy to Install
- Mounts Vertically or Horizontally
- ANSI/UL325 Recognized Component



For more information, please visit www.devancocanada.com
or call toll free at 855-931-3334

Model # ME113

SensingEdge

Installation

Place appropriate ME113 mounting channel in desired location. Drill 1/8" holes through channel and into mounting surface every 24". Slide ME113 Sensing Edge into channel. Attach channel to surface with screws and wire to controls.

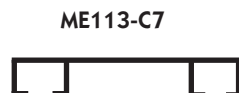
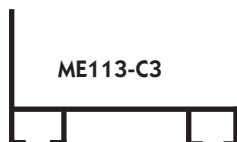
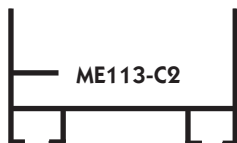
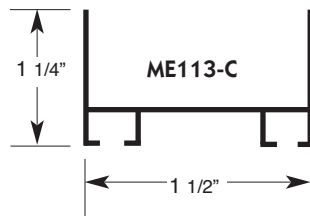
Note:

For safe operation, use a maximum 24 volt, 1/2 amp AC/DC power. Overload can cause damage. For detailed installation instructions, contact Miller Edge, Inc.

Care of the ME113. . .

Minimum care is required for the ME113 since it is manufactured with only the most durable materials and the highest quality control standards. However, Sensing Edges should be examined regularly for cuts or punctures which could damage internal components. Check wiring to be sure connections are secure. When properly maintained, the ME113 offers years of trouble free operation.

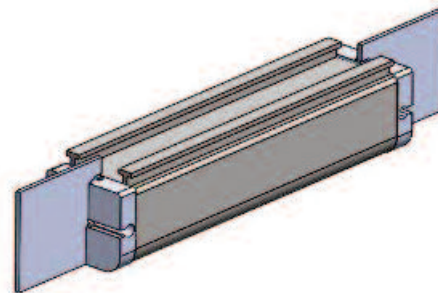
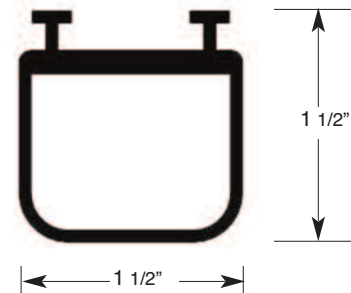
Mounting Channels:



Warranty

We will replace within one year of shipment from our factory, any Sensing Edge subject to normal use which is found to have defective materials or workmanship, as determined solely by our factory representative. Replacements will be shipped to you freight collect. This warranty is void where evidence of misuse or abuse is present.

Mechanical Diagrams:



Universal End Plugs and Flaps



U.S. Patent #5,962,825 & #8,832,996 B2 CAN. Patent #2,008,021

ME113_Spec_20150223

For more information, please visit www.devancocanada.com
or call toll free at 855-931-3334