

SensingEdge

Applications

- **Sectional Doors**
- **Scissors Lifts**
- **Sliding Gates**
- **Conveyors**
- **Presses**

About the ME123...

This pressure sensitive electric edge can be adapted to suit a wide variety of applications. When touch activated, the ME123 sends an immediate electrical signal to controls to stop and/or reverse operations. The ME123 Sensing Edge has been designed to fit most sectional doors and is custom manufactured to required length.

OPTIONS:

- Color: Caution yellow (ME123Y)
- 4 wire fail-safe configuration (highly recommended)
- Soft ends
- Coil Cord attached
- Retracting Reel
- 4 wire fail-safe intrinsically safe Control Panel (FSIS-35-4)
- Air-Wave (MAW123) Pneumatic (MEP123)



TECHNICAL SPECIFICATIONS:

Color:	Black
Length:	per specification to nearest 1/4
Lead Wire:	SJTO, 18 gauge, 2ft. length or 22 gauge universal
Sensitivity:	nominal 6-11 lbf
Electrical Diagram:	2 wire N.O. configuration
Electrical Maximum:	24 volt AC or DC, 1/2 amp
Mechanical Diagram:	See drawings on reverse side
Contact Element:	Alumaglas®
Materials:	Extruded Flexible PVC
Mounting Channel:	High - Density PVC
Temperature Range:	-30°F to +155°F
Wire Outlet Location:	Universal, Right side, Left side or End

FUNCTIONAL BENEFITS:

- Touch Sensitive signalling
- Small profile
- Easy to Install
- Mounts vertically or horizontally
- ANSI/UL325 Recognized Component



For more information, please visit www.devancocanada.com
or call toll free at 855-931-3334

Model # ME123

SensingEdge

Installation

Slide ME123 Sensing Edge into proper channel.
To attach mounting channel, place in desired location.
Drill 1/8" holes through channel and into mounting surface. Secure with screws.

Note: For safe operation, use a maximum 24 volt, 1/2 amp AC or DC power. For detailed installation and wiring instructions, contact MillerEdge, Inc.

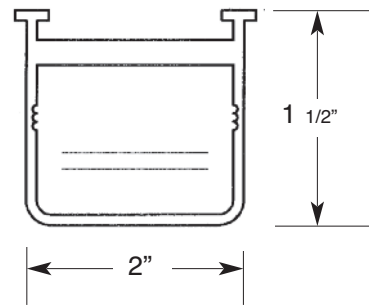
Care of the ME123. . .

Minimal care is required for the ME123 since it is manufactured with only the most durable materials and the highest quality control standards. However, Sensing Edges must be examined regularly for cuts or punctures which could damage internal components. Check wiring to be sure connections are secure. When properly maintained, the ME123 offers years of trouble free operations.

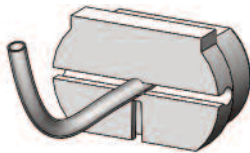
Warranty

We will replace within one year of shipment from our factory, any Sensing Edge subject to normal use which is found to have defective materials or workmanship, as determined solely by our factory representative. Replacements will be shipped to you freight collect. This warranty is void where evidence of misuse or abuse is present.

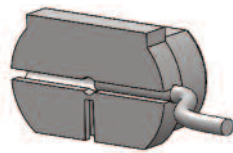
Mechanical Diagrams:



Wire Outlet Locations:

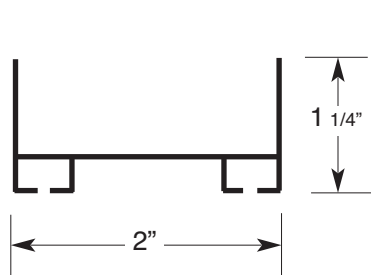


Universal End

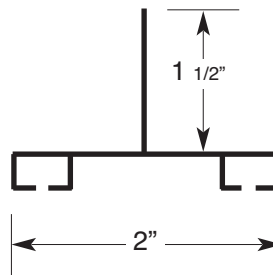


Universal Side

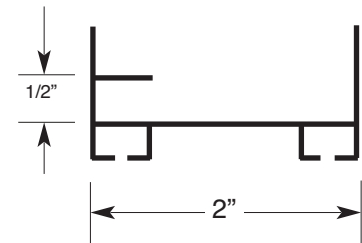
Mounting Channels:



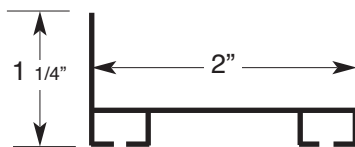
ME123-C



ME123-C1

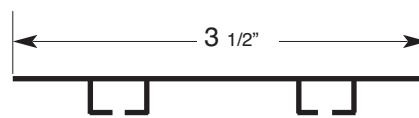


ME123-C2175



ME123-C3

ME123-CA3 (Aluminum)



ME123-C7



Contact Miller Edge to ensure compatibility with your operating controls.
U.S. Patent #5,962,825 & #8,832,996 B2 CAN. Patent #2,008,021

ME123_Spec_20150223

For more information, please visit www.devancocanada.com
or call toll free at 855-931-3334