

**"TILT DETECTOR" WILL MINIMIZE THE
DAMAGE CAUSED TO INDIVIDUAL SLATS
DURING A NEGATIVE OPERATION**

**BY MINIMIZING THE DAMAGE CAUSED
"TILT DETECTOR" WILL REDUCE THE
EXPENSIVE COSTS OF REPLACING
SLATS.**



THE TILT DETECTOR



**IN TODAY'S MARKET OF HIGH
COMPETITION, WHO CAN AFFORD
THE KIND OF PRODUCTION DOWNTIME
CAUSED BY A DAMAGED DOOR?**

**THE LARGE COSTS OF REPAIR AND
REPLACEMENT PARTS CAN REALLY
CUT INTO DEPARTMENTAL BUDGETS.**

**For more information, please visit www.devancocanada.com
or call toll free at 855-931-3334**

Conventional Safety Devices

Conventional Safety Devices such as photo-eyes or safety edges along the bottom of the door only detect obstructions within the actual opening of the door



The Tilt Detector

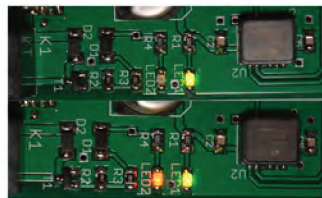
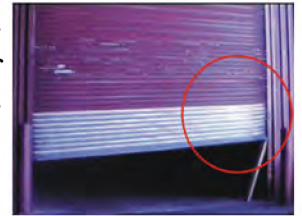
The Tilt Detector offers complete protection. The Tilt Detector will sense obstructions caused by a bent guide or twisted end lock. These obstructions can cause potentially hazardous conditions and expensive repairs.

The Tilt Detector will sense a 5° “tilt” in the door and automatically stop the motor.



Bunching Slats Cause Potential Damage Without The Tilt Detector

With the Tilt Detector Minimal Bunching of Slats Keeping The Door Within Safe Parameters



Easy read LED indicators show power and when an obstruction is detected

REDUCE EXPENSIVE REPAIRS

THE AVERAGE COST OF REPAIRING A ROLLING STEEL DOOR AFTER IT HAS "CRASHED" CAN BE THOUSANDS OF DOLLARS.

"TILT DETECTOR" IS THE MOST COST EFFICIENT PREVENTATIVE POLICY ON THE MARKET TODAY. FOR JUST A FEW HUNDRED DOLLARS PER DOOR THOUSANDS IN REPAIRS CAN BE SAVED.

REDUCE EXPENSIVE DOWNTIME

LOST PRODUCTION DURING DOWNTIME CAN BE EXTREMELY EXPENSIVE
LENGTHY DELAYS IN PRODUCTION CAN CAUSE CONSUMER RELATION PROBLEMS

**For more information:
www.devancocanada.com
or call toll free at 855-931-3334**

