



RSX

Circuit Board

Replacement Instruction

SERVICE NUMBER: 111399.0001

Part Included: Circuit Board

Tools Required: Screwdriver, 1/4" nut driver, 1/2" wrench or nut driver.

Approximate Time Required: 15 Minutes



WARNING

BE SURE ELECTRICAL POWER HAS BEEN DISCONNECTED FROM THE INPUT POWER LINES PRIOR TO REMOVING THE ELECTRICAL BOX COVER. AN APPROPRIATE LOCKOUT/TAGOUT PROCEDURE IS RECOMMENDED

1. REMOVE POWER FROM UNIT. USE PROPER LOCKOUT/TAGOUT PROCEDURES (REFERENCE OSHA STANDARD 1910.147)
2. OPEN COVER, MARK OR NOTATE WIRE CONNECTIONS AND REMOVE CONTROL AND POWER INPUT WIRES.
3. UNPLUG TRANSFORMER, MOTOR, BRAKE, LIMIT SWITCH AND RECEIVER HARNESSSES.
4. UNPLUG ACCESSORY BOARD(S), HOIST INTERLOCK, AND CIRCUIT BREAKER/CIRCUIT BREAKER JUMPER WIRE.
5. REMOVE ANTENNA.
6. REMOVE RECEIVER BOARD FROM THE 1/2" NUT ON ANTENNA CONNECTOR.
7. REMOVE 5 MAIN CIRCUIT BOARD SCREWS. NOTE THE 3 SCREWS CIRCLED IN FIG-1. THESE SCREWS HAVE NYLON SPACERS THAT MUST REMAIN WITH THE SCREWS WHEN BOARD IS REPLACED.
8. PUSH BACK SLIGHTLY ON CIRCUIT BOARD RETAINING CLIP AND SLIDE BOARD OUT OF MOUNTING BRACKET.
9. INSERT BOARD INTO MOUNTING BRACKET TABS AND ENSURE THAT RETAINING CLIP HOLDS THE BOARD IN PLACE AND THE 3 SCREWS NOTED IN STEP 6 ARE INSTALLED WITH THE NYLON SPACERS. FIG 2.
10. REPLACE RECEIVER BOARD, ANTENNA, HARNESSSES, INPUT POWER, CIRCUIT BREAKER/JUMPER AND CONTROL WIRES.
11. RETURN INPUT POWER TO OPERATOR.
12. PROGRAM CIRCUIT BOARD PER THE SETUP INSTRUCTIONS IN THE OWNERS MANUAL.

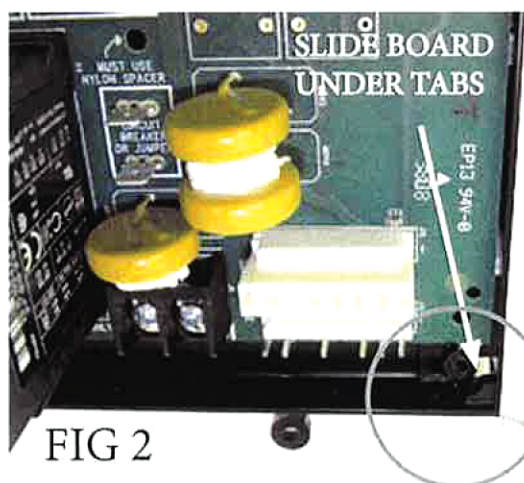
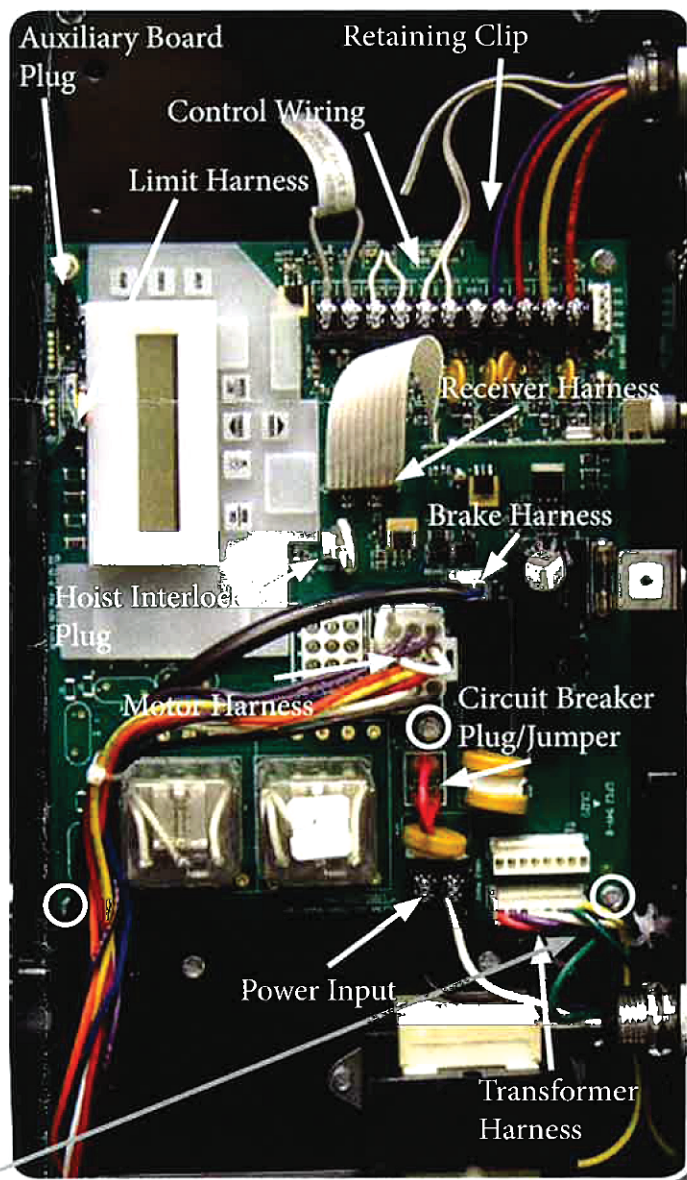


FIG 2

FIG 1



***HOW TO ORDER
REPAIR PARTS***

DEVANCO CANADA

19192 HAY ROAD, UNIT Q
SUMMERSTOWN, ON K0C 2E0

TOLL FREE: 855-931-3334

www.devancocanada.com

**WHEN ORDERING REPAIR PARTS
PLEASE SUPPLY THE
FOLLOWING INFORMATION:**

- ✓ PART NUMBER
- ✓ DESCRIPTION
- ✓ MODEL NUMBER