

Doorlec DC-3200R Industrial Radio Receiver

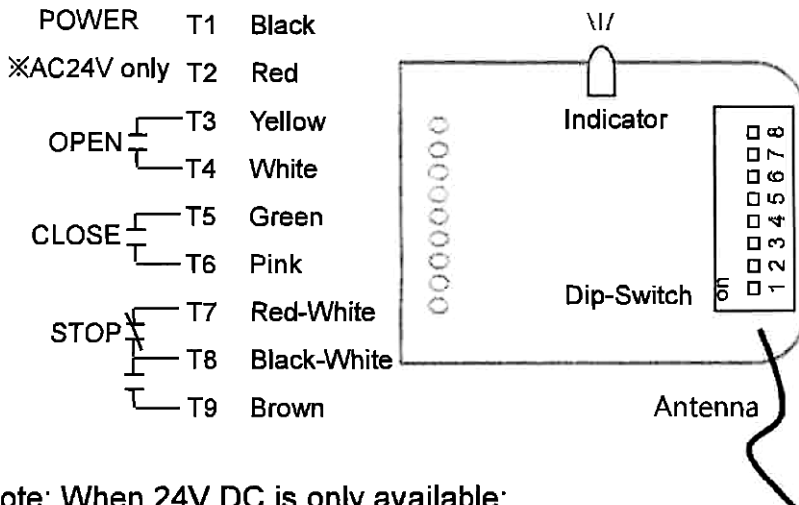
Wiring Instructions

The model 3200R commercial receiver is provided with three isolated contacts, a normally open contact for OPEN, a normally open contact for CLOSE, and a normally closed contact for STOP. Wire these contacts identical to a 3-button station.

Follow the steps:

1. Connect Terminal #7 to Terminal #6 and Terminal #4
2. Disconnect the wire from the push-button common of any 3-button station
3. Connect Terminal #8 to common of the 3-button station
4. Connect Terminal #7 to the wire removed from the push-button common.
5. Connect Terminal #5 to the STOP push-button
6. Connect Terminal #3 to the OPEN push-button

To finish the installation connect AC 24V to Terminal#1 and #2 or if the radio receiver has a transformer (115V convert to AC 24V) connect to Terminal#1 and #2

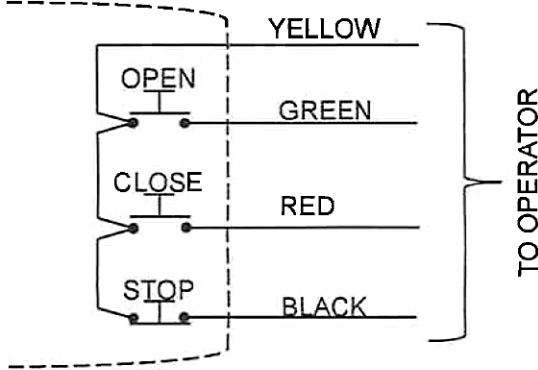


Note: When 24V DC is only available:

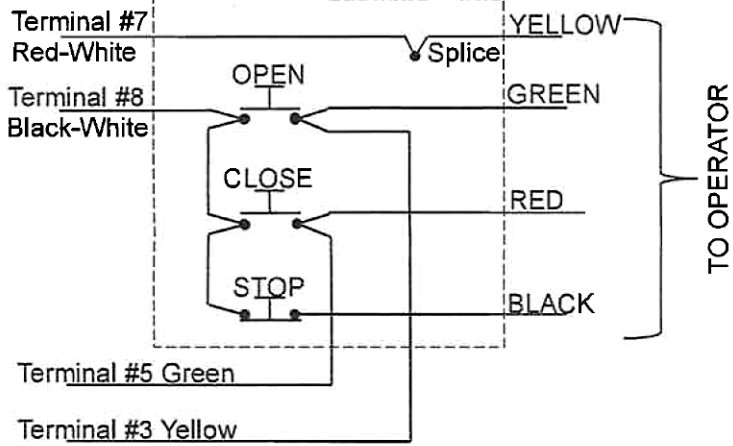
Connect minus - to T1 Black to DC2000 No.11

Connect plus + to T2 Red to DC2000 No.1

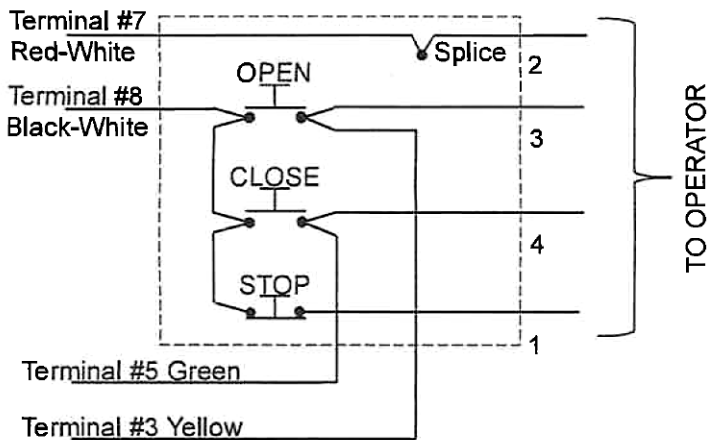
Original wiring without DC2000 controller



Modified wiring without DC2000 controller



Modified wiring with DC2000 controller



***HOW TO ORDER
REPAIR PARTS***

DEVANCO CANADA

19192 HAY ROAD, UNIT Q
SUMMERSTOWN, ON K0C 2E0

TOLL FREE: 855-931-3334

www.devancocanada.com

**WHEN ORDERING REPAIR PARTS
PLEASE SUPPLY THE
FOLLOWING INFORMATION:**

- ✓ PART NUMBER
- ✓ DESCRIPTION
- ✓ MODEL NUMBER