

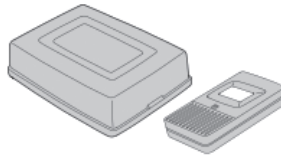
# DELTA-3 SYSTEM

## Single-channel Digital Receiver and Transmitter

Code Setting and Installation Instructions

**Linear**

For more info: [www.devancocanada.com](http://www.devancocanada.com)  
or call toll free at 855-931-3334



### DESCRIPTION

The Delta-3 digital receiver and transmitter is a single-channel wireless radio control designed for use with automatic garage/gate operators and access control systems. All Delta-3 products (on the same frequency) can be mixed and matched to suit your individual needs.

The Delta-3 radio format provides 256 different digital codes. The codes are set using the 8-position coding switches in the units.

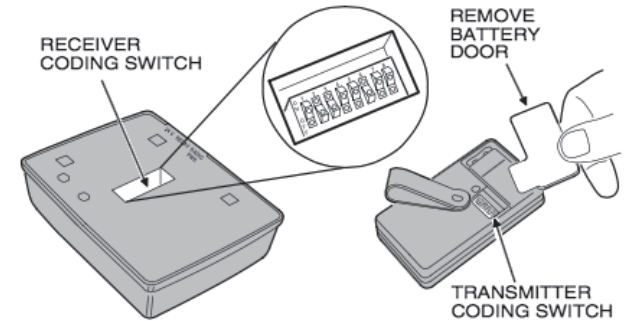
**Caution: All transmitters and receivers should be recoded prior to operation.**

In order to avoid the possibility of duplicating codes in adjacent systems, factory set codes should not be used. In addition, among the valid codes available, four others should not be used. These include: all keys set ON or OFF and keys set alternating ON/OFF.

Where a number of receivers are to be installed in close proximity (as in an apartment complex), install receivers at least 5 feet apart. If receivers are installed closer than 5 feet apart, blocking may occur.

After completing an installation, operate the transmitter outside the building and check to see that the coded signal being used does not interfere with neighboring garage door operators and/or security systems. If interference is detected, select another code and check coded signal again. Repeat if necessary.

**Step 1 Locate Coding Switches.** Locate the digital coding switch for the receiver which is recessed in the center of the back of the case. The transmitter coding switch is accessed by removing the battery access door located on the back of the transmitter case. The keys are numbered 1 through 8. The switches in the receiver must match the switches in all transmitters used to operate the receiver.



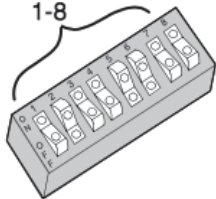
**Step 2 Code Transmitter and Receiver.** Use a paper clip or other pointed object (except a pencil or pen) to pick any combination of ON/OFF codes and set them on switch keys 1 through 8 on the receiver and transmitter. The ON position is when the top of the switch is down. The OFF position is when the top of the switch is up and the bottom is down.

**Step 3A Connecting Receiver (using transformer power).** Where it is not feasible to obtain power from the operator, connect a Model 524 transformer (accessory) to the receiver as shown below. Then plug the transformer into a convenient (unswitched) 110 VAC outlet.

**Step 3B Connecting receiver (using operator power).** Connect the receiver to the garage door or gate operator as shown in the diagram. Power will be supplied from the operator.

#### DELTA-3 RECEIVER

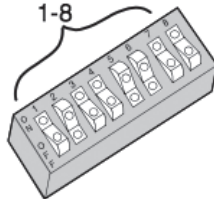
SET 1-8



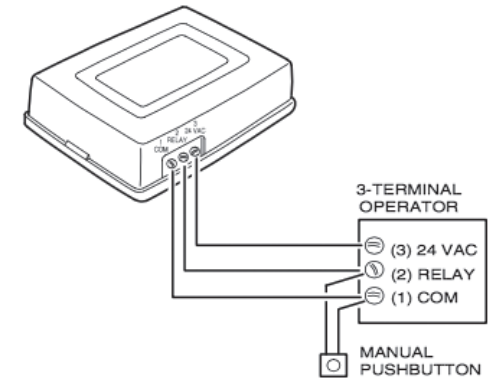
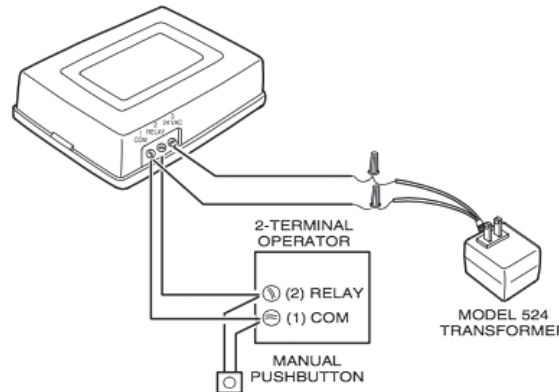
SWITCHES 1, 3, 4, 7 & 8 ARE "ON" 2, 5 & 6 ARE "OFF"

#### DELTA-3 TRANSMITTER

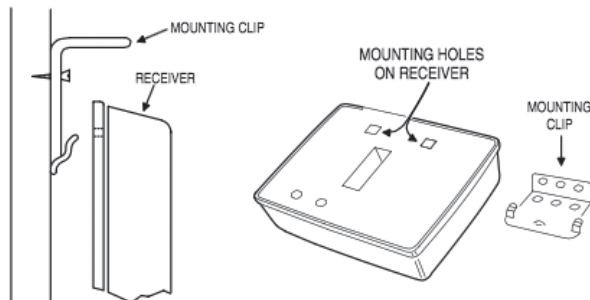
MATCH 1-8



ALL TRANSMITTER SWITCHES MUST MATCH RECEIVER SWITCHES



**Step 4 Remote Mounting.** A mounting clip is packaged with each receiver. To install the receiver, attach the clip to the mounting surface with screws. Position the two rectangular holes on the back of the receiver over the clip and snap the receiver down into place.



### LINEAR LIMITED WARRANTY

This product is warranted to the consumer against defects in material and workmanship for one year from the date of purchase. This warranty applies to first retail buyers of new devices. Warrantor will repair, or at its option, replace, any device it finds that requires service under this warranty, and will return the repaired or replaced device to the consumer at the warrantor's cost. For warranty service and shipping instructions contact warrantor at the phone number shown below. Devices must be sent to warrantor for service at owner's expense. The remedies provided by this warranty are exclusive. Implied warranties under state law are to the one year period of this written warranty. Some states do not allow limitations on how long an implied warranty lasts, so the above limitation may not apply to you. In order to be protected by this warranty, save your proof of purchase and send copy with equipment should repair be required. This warranty gives you specific legal rights, and you may also have other rights which vary from state to state.

All products returned for warranty service require a Return Product Authorization Number (RPA#). Contact Linear Technical Services at 1-800-421-1587 for an RPA# and other important details.

### IMPORTANT !!!

Linear radio controls provide a reliable communications link and fill an important need in portable wireless signaling. However, there are some limitations which must be observed.

- \* For U.S. installations only: The radios are required to comply with FCC Rules and Regulations as Part 15 devices. As such, they have limited transmitter frequencies, and therefore limited range.
- \* A receiver cannot respond to more than one transmitted signal at a time and may be blocked by radio signals that occur on or near their operating frequencies, regardless of code settings.
- \* Changes or modifications to the device may void FCC compliance.
- \* Infrequently used radio links should be tested regularly to protect against undetected interference or fault.
- \* A general knowledge of radio and its vagaries should be gained prior to acting as a wholesale distributor or dealer, and these facts should be communicated to the ultimate users.

This device complies with FCC Rules Part 15 and IC Canada Rules and Regulations. Operation is subject to the following two conditions: (1) This device may not cause harmful interference and (2) this device must accept any interference received, including interference that may cause undesired operation.

***HOW TO ORDER REPAIR PARTS***

**DEVANCO CANADA**

19192 HAY ROAD, UNIT Q  
SUMMERSTOWN, ON K0C 2E0

TOLL FREE: 855-931-3334  
[www.devancocanada.com](http://www.devancocanada.com)

**WHEN ORDERING REPAIR PARTS  
PLEASE SUPPLY THE FOLLOWING INFORMATION:**

- ✓ PART NUMBER
- ✓ DESCRIPTION
- ✓ MODEL NUMBER