

# Linear PRO ACCESS™ MTR1 MTR3

## 1 and 3 Button Transmitter Operation Instructions



### DESCRIPTION

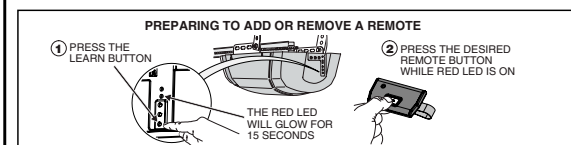
The Linear PRO Access digital transmitter is a wireless radio control designed for use with automatic garage and gate operators.

Each of the transmitter buttons will send a unique code when pressed. One button can be used to activate the individual's garage door opener, a second button can operate an access gate, a third button can activate an additional garage door operator.

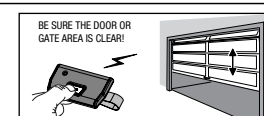
Linear PRO Access transmitters and receivers do not contain a typical "coding switch". Each transmitter is permanently coded at the factory. The receiver is programmed by "learning" a transmitter's unique digital code. The receiver will activate only from the "memorized" transmitters.

The transmitter is powered by a Type CR2032 "coin-cell" battery. They should last at least 1 year with normal use. The indicator light on the transmitter will glow when the unit is activated. If the indicator lights dimly, or not at all when transmitting, the battery needs to be replaced. To conserve battery life, an internal timer limits the transmission duration to 20 seconds if a transmitter button is held down.

- 1 Refer to the instructions provided with the garage door opener to set it into "learn" mode.
  - Press the opener's LEARN BUTTON for 1 second and release.
  - The opener should BEEP and the LIGHT should BLINK once.
  - The RED LED will remain lit in Learn Mode for 15 seconds.
- 2 While the RED LED is lit, PRESS and HOLD the transmitter's START/STOP key until the opener BEEPS and the light BLINKS once.

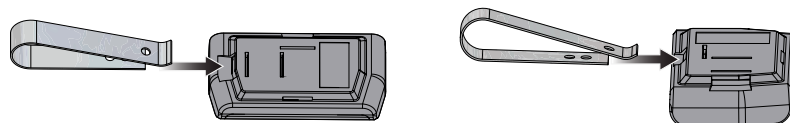


After programming, test the transmitter from various locations. **Be sure the door or gate areas are clear.** Activate the transmitter and verify that the remote triggers the operator(s).



### VISOR CLIP INSTALLATION

The visor clip can be installed for horizontal or vertical mounting. Slide the visor clip into one of the slots shown.



### LIMITED WARRANTY

This product is warranted to the consumer against defects in material and workmanship for one year from the date of purchase. This warranty applies to first retail buyers of new devices. Warrantor will repair, or at its option, replace, any device it finds that requires service under this warranty, and will return the repaired or replaced device to the consumer at the warrantor's cost. For warranty service and shipping instructions contact warrantor at the address shown below. Devices must be sent to warrantor for service at owner's expense. The remedies provided by this warranty are exclusive. Implied warranties under state law are to the one year period of this written warranty. Some states do not allow limitations on how long an implied warranty lasts, so the above limitation may not apply to you. In order to be protected by this warranty, save your proof of purchase and send copy with equipment should repair be required. This warranty gives you specific legal rights, and you may also have other rights which vary from state to state.

All products returned for warranty service require a Return Product Authorization Number (RPA#). Contact Linear Technical Service at 1-800-543-1236 for an RPA# and other important details.

### REPLACING THE BATTERY

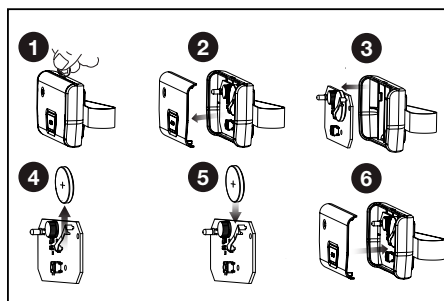
When the indicator light on the remote glows dimly, or fails to light at all when the remote is activated, the battery needs replacing.

Follow the steps in the diagram and use caution to keep batteries away from children.

Replace old battery with a fresh CR2032 Lithium battery.

Properly dispose of old batteries. Many electronic stores and supermarkets have battery recycling bins.

Never dispose of batteries in fire because they could explode.



### ⚠ WARNING

KEEP BATTERIES OUT REACH OF CHILDREN. Swallowing batteries can lead to serious injury or death. If you suspect someone has swallowed a battery, go to the hospital immediately. Do not induce vomiting or eat or drink anything. For more information, call the National Battery Ingestion Hotline: 202-625-3333. The battery identification number for this product is CR2032.

### IMPORTANT !!!

Linear PRO Access radio controls provide a reliable communications link and fill an important need in portable wireless signaling. However, there are some limitations which must be observed.

- For U.S. installations only: The radios are required to comply with FCC Rules and Regulations as Part 15 devices. As such, they have limited transmitter power and therefore limited range.
- A receiver cannot respond to more than one transmitted signal at a time and may be blocked by radio signals that occur on or near their operating frequencies, regardless of code settings.
- Changes or modifications to the device may void FCC compliance.
- Infrequently used radio links should be tested regularly to protect against undetected interference or fault.
- A general knowledge of radio and its vagaries should be gained prior to acting as a wholesale distributor or dealer, and these facts should be communicated to the ultimate users.

**WARNING:** Changes, modifications or adjustments not expressly approved by GTO Access Systems, LLC could void the user's authority to operate this equipment. There Are No User Serviceable Parts.

**NOTICE:** This device complies with part 15 of the FCC rules and with Industry Canada license-exempt RSS standard(s). Operation is subject to the following two conditions: (1) this device may not cause interference, and (2) this device must accept any interference, including interference that may cause undesired operation of the device.

Le présent appareil est conforme aux CNR d'Industrie Canada applicables aux appareils radio exempts de licence. L'exploitation est autorisée aux deux conditions suivantes : (1) l'appareil ne doit pas produire de brouillage, et (2) l'utilisateur de l'appareil doit accepter tout brouillage radioélectrique subi, même si le brouillage est susceptible d'en compromettre le fonctionnement.

Copyright © 2016 GTO Access Systems, LLC

Document Number: 10014570 REV A

**For more information, please visit [www.devancocanada.com](http://www.devancocanada.com) or call toll free at 855-931-3334**