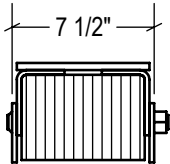
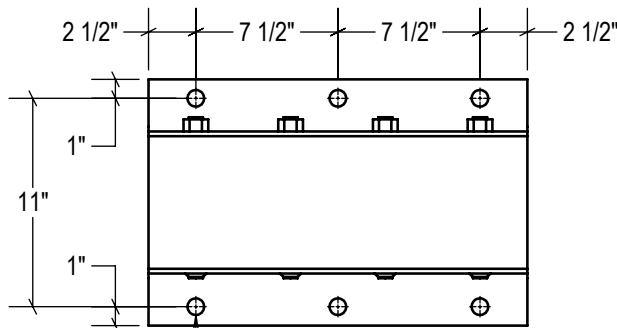


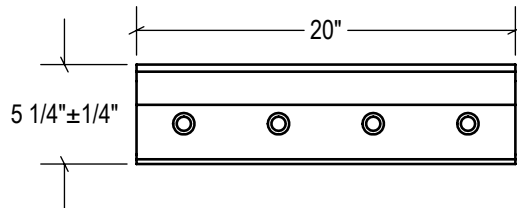
P1 CONFIG.



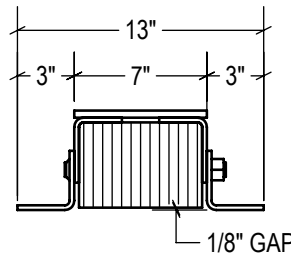
P2 CONFIG.



TOP VIEW

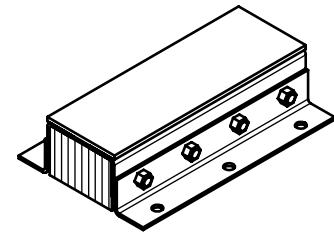


FRONT VIEW

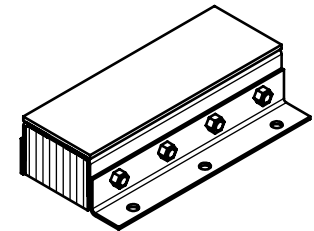


SIDE VIEW

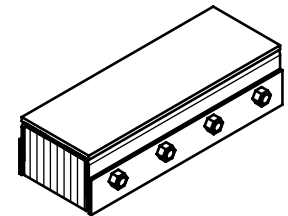
STANDARD  
model #: TVB420-11SF  
part #: 22-6040  
Bolted (2) Sides



P1 CONFIG.  
model #: TVB420-11SF/P1  
part #: 22-6041  
Welded (1) Side



P2 CONFIG.  
model #: TVB420-11SF/P2  
part #: 22-6042  
Welded (2) Sides



SPECIFICATIONS:

LAMINATED PADS SHALL BE MADE FROM RECYCLED CONVEYOR BELTING AND TIRE RUBBER CUT TO 4.125" x 10" PUNCHED AND ASSEMBLED THROUGH 3/4" RODS BETWEEN 3" x 3" x 1/4" FORMED STEEL UNDER 1,500LBS OF PRESSURE. FINISH OF EXPOSED METAL SHALL BE PAINTED WITH WATER-BASED AND LEAD-FREE PAINT OR HOT-DIPPED GALVANIZED (OPTIONAL).

ALL DIMENSIONS ARE ±1/8" UNLESS SPECIFIED OTHERWISE

**DEVANCO**  
CANADA

www.DevancoCanada.com  
855-931-3334

 3rd Angle	SIZE: <b>A</b>	ESTIMATED GROSS SHIPPING WEIGHT = 74 LBS	
	DESCRIPTION: <b>STEEL-FACED LAMINATED BUMPER TVB420-11SF</b>		
SCALE: <b>1:10</b>	SHEETS: <b>1 of 1</b>	DRAWING NUMBER: <b>MKT_TV420-11SF</b>	REV: <b>1</b>